



KP KP OPEN DATA PORTAL **OPENGOV** IN DATA WE TRUST

OPEN DATA STRATEGY





TABLE OF CONTENTS

| | | |
|-----|--|----|
| 1. | Introduction..... | 2 |
| 2. | Vision..... | 5 |
| 3. | Mission Statement..... | 6 |
| 4. | Drivers..... | 7 |
| 5. | Strategic Goals..... | 8 |
| 6. | Outcomes..... | 10 |
| 7. | Guiding Principals..... | 13 |
| 8. | Objectives..... | 14 |
| 9. | Intended Benefits..... | 15 |
| 10. | Critical Success Factors..... | 16 |
| 11. | Governance of Open Government Data..... | 17 |
| 12. | Technical Framework..... | 19 |
| a. | Need for Open Government Data Technical Framework..... | 19 |
| b. | Publishing Open Government Data..... | 19 |
| c. | Recommended Formats, Metadata, schema, standards..... | 20 |
| d. | Recommended Metadata Schema for Open Data..... | 21 |
| e. | Recommended Standards for Open Data..... | 21 |
| f. | Unique Resource Identifiers..... | 22 |
| 13. | Key Performance Indicator..... | 23 |
| 14. | Strategic themes - data catalogue..... | 24 |
| 15. | Implementation Plan..... | 25 |
| | Acknowledgment | 26 |



1. INTRODUCTRION



The amount of global data produced by mobile devices each month is forecasted to be over 11 million terabytes and is predicted to reach 930 exabytes in 2022. This incredible amount of information is a result of increasing ability to communicate, share and create content, which in turn is changing relationships between citizens, businesses, and governments across the world. The information and social media revolution are changing the correlation between citizens and governments globally. The government generates a large amount of data as a result of daily functionality. However, a large quantum of government data remains inaccessible to citizens, civil society and the government itself. Even though most of the data may be non-sensitive/citizen-centric in nature and could be used by the public for social, economic and development purposes.

Open government data is made available for anyone to access, use, and share across the globe. Instead of increasing information asymmetry, where a few government offices keep public data locked up, open data lays the groundwork for all citizens to get involved in shaping policies and strategies. Furthermore, when data is treated as a part of a shared commons, co-created and co-maintained, duplicated data collection activity can be eliminated, and return on investment from managing datasets can be unlocked in terms of openness, responsiveness and subsequently citizen trust.

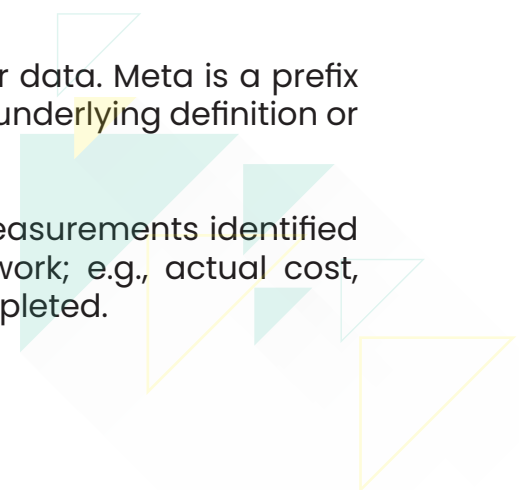
Governments have a large number of basic datasets available, which can be of economic and social value to society as a whole. Along those lines, countries are developing policies to release this data as Open (Government) Data. Open Data refers to information that can be freely used, modified, and shared by anyone for any purpose. It must be available under an open license and provided in a convenient, modifiable and machine-readable format. The expected impact of Open Data policies and the development of data portals is to drive transparency and openness. The efficient sharing of data among data owners (government facilities) and inter and intra-governmental departments/offices along with data standards and interoperable systems is the need of the hour. Hence, there was a need to formulate a strategy on Open Government Data enabling provision and platform for proactive and open access to the data generated through government offices available with various ministries/ departments/ organizations of the Government of Khyber Pakhtunkhwa.



Subsequently, pursuant to the promulgation of the Right to Information Act 2014 and Good Governance Strategy 2019, both these documents establish a framework to help institutionalize the principles of effective information management/sharing at each stage of the information's life cycle to promote interoperability and openness. Whether or not particular information (citizen-centric, non-confidential) can be made public, government offices can apply this framework to all information resources to promote efficiency and produce value.

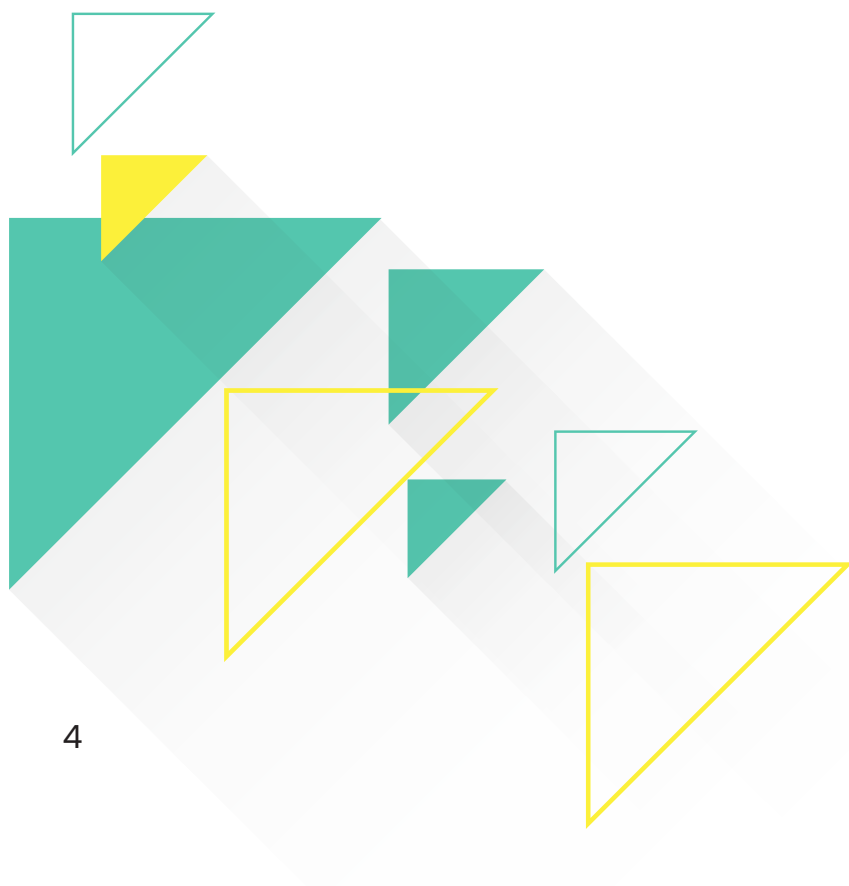
The Open Government Data Strategy (OGDS) is designed to apply to all sharable non-sensitive/citizen-centric data available either in digital or analog forms generated by various government entities i.e. departments/directorates/attach formation/autonomous organizations/districts administration of Government of Khyber Pakhtunkhwa. The OGD Strategy is designed to promote data sharing and enable access to the Government of Khyber Pakhtunkhwa owned data for planning, development, research, openness, transparency, and awareness. OGDS aims to provide an enabling platform for proactive and open access to the data generated by the Government of Khyber Pakhtunkhwa entities. The objective of this strategy is to facilitate access to Government of Khyber Pakhtunkhwa's owned shareable data (along with its usage information) in machine-readable form through a public web portal and mobile app in a periodically updatable manner, within the framework of various related policies, acts and rules of Government of Khyber Pakhtunkhwa, thereby permitting a wider spectrum of data to be collected. Data can be further classified into different categories:

1. **Data:** Data is any set of characters that is gathered and translated for some purpose, usually analysis. It can be any character, including text and numbers, pictures, sound, or video. If data is not put into context, it doesn't do anything to a human or computer.
2. **User Data:** User Data means any Personal Data or other data or information collected by or on behalf of the Company or any Subsidiary from users of the Products.
3. **Meta Data:** Metadata is data that describes other data. Meta is a prefix that in most information technology usages means "an underlying definition or description.
4. **Performance Data:** The raw observations and measurements identified during activities performed to carry out the project work; e.g., actual cost, actual duration, and the percent of work physically completed.



To realize the potential of a new era of government-citizen interactions, the objectives of Open Government Data Strategy identifies three 'streams' of effort:

1. Creating the Open Data Portal to make government data easily and publicly available.
2. Developing an online repository to enhance access to government publications, information, and services.
3. Leading the creation of a new public engagement framework to modernize the way government and citizens communicate effectively.



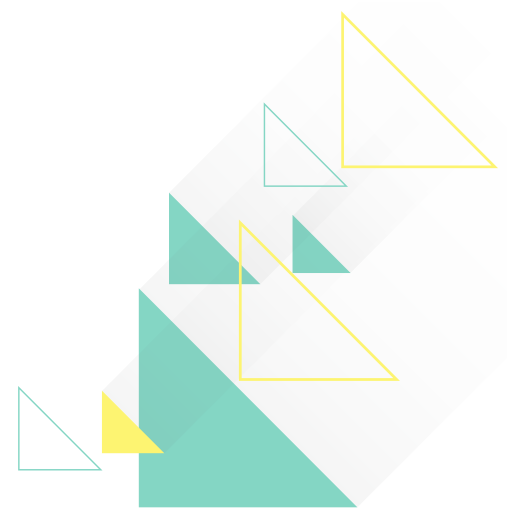


VISION

“ Driving transparent,
open & responsive governance,
openly engaged with citizen ”



3.MISSION STATEMENT

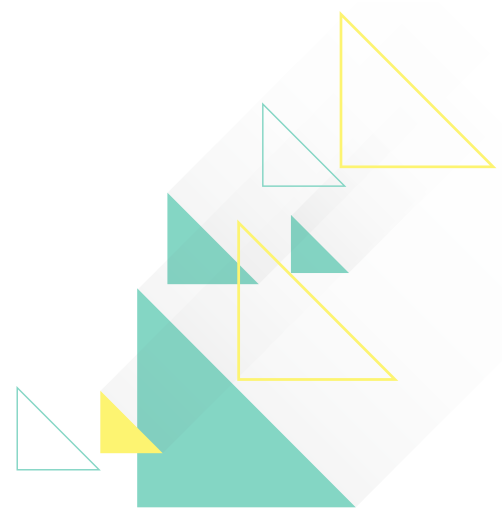


Our mission is to encourage and drive the use of Open Data by increasing transparency, stimulating application openness, building trust in government and improving the lives of citizens by delivering better public services.

This will be achieved by:

1. Publishing government data (non-confidential) as Open Data by default (frequency-driven).
2. Creating a more collaborative culture within public service delivery, and enabling citizen participation.
3. Providing citizens with access to data and information the government creates, shares and distributes.
4. Encouraging and facilitating engagement of citizens with their government.
5. Engaging with a broad community of stakeholders to promote and





5. STRATEGIC GOALS

G1. AVAILABILITY OF INFORMATION

- Increase the availability of information by making it easier to find and release data on a routine basis.
- Educate citizens on the use and meaning of information to increase information literacy and reuse.
- Implement better and coordinated reporting.

G2. COLLABORATION

- Leverage data across Government offices to improve execution, control, and decision-making.
- Encourage the innovative use of technology for a consistent and coordinated approach to an enterprise collaboration with citizens and within the Government of Khyber Pakhtunkhwa.

G3. ACCOUNTABILITY

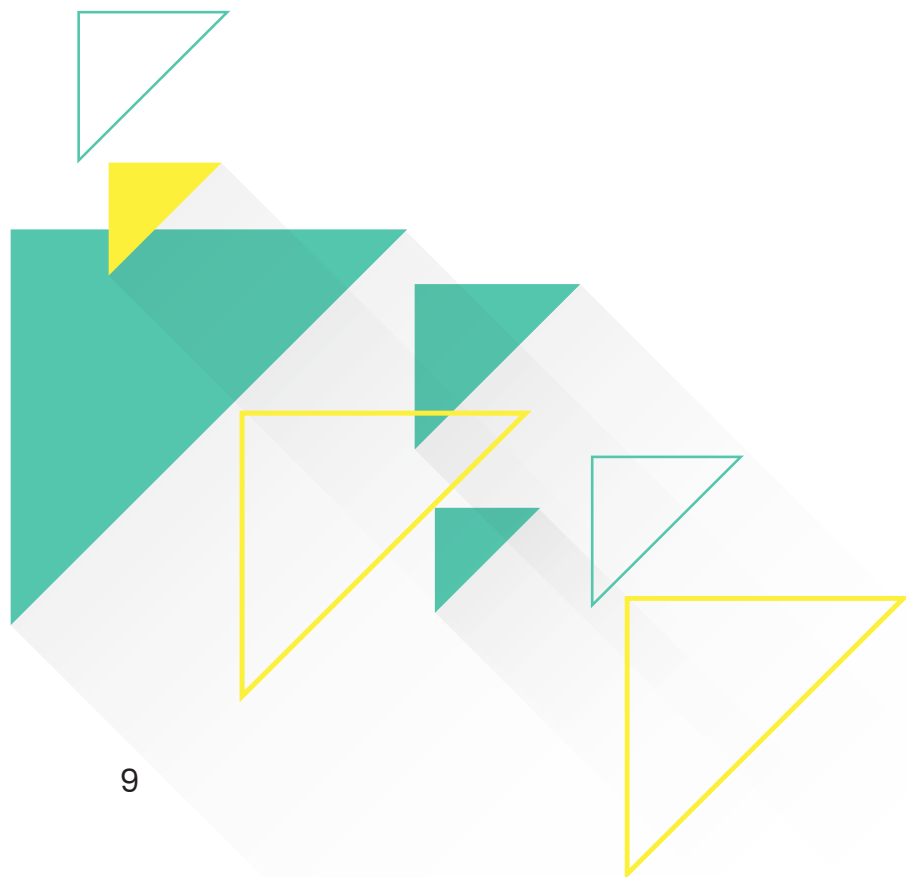
- Foster accountability through transparency and meaningful communication protocols.
- Increase the credibility of decision-making in the entities involved with public service delivery by making the process more open, simple, transparent and inclusive.

G4. CITIZEN PARTICIPATION

- Enhance citizen engagement by making consultation activities more valuable. This will be made possible by increasing public awareness on the importance of data, and building confidence in the decision-making process through a robust feedback mechanism.
- The public service delivery offices to work together with citizens to make government more responsive to meet the evolving needs of open, responsive and accountable governance.

G5. IMPROVEMENT IN ECONOMIC INFRASTRUCTURE

- Open data is supports innovation and growth by revealing opportunities for businesses large and small to build new services, identify savings and improve operations.
- Open data stimulates innovation by removing barriers to access, use and shareability of data. According to Mckinsey report Open data—public information and shared data from private sources—can help create \$3 trillion a year of value in seven areas of the global economy.
- Governments need to support data infrastructure that connects data with those who use it. To support the emergence of new data-driven businesses and the growth of existing ones, governments need to publish key datasets.



6. OUTCOMES

OUTCOME #1 INCREASED TRANSPARENCY

- The data and information are transparent and accessible and citizens have the necessary tools to access the information and engage with the Government.
- Increased transparency of government data and processes will lead to citizens having more confidence in decisions made by the Government.
- The ability of Government offices (departments/directorates and attach formations, etc.) to have increased visibility of information and services provided to the citizens. This will provide increased opportunities to identify program overlap, develop efficiencies and will enable the government to design better digital services.
- Providing facility to citizens to visualize the context of government data, and improve understanding and awareness of government programs, processes, control measures and results.

MEASURES

- Increases in the amount of information routinely disclosed.
- Decreased number of information requests (on demand)
- An increase in cross-departmental initiatives for information sharing.

OUTCOME #2 IMPROVED ENGAGEMENT

- The Government of Khyber Pakhtunkhwa has a unified and consistent approach for digital engagement that improves government decision-making and actions. Being more open in decision-making will increase the legitimacy of decisions made by government offices and improve the engagement experience of citizens.
- By improving the overall engagement process and educating citizens on how their input is used in planning and budgeting, citizens will be more likely to become engaged.

MEASURES

- The number of citizens consulted on government-to-citizen initiatives.
- Overall citizen satisfaction with engagement initiatives such as the citizen portal

OUTCOME #3 CITIZEN-CENTRIC GOVERNMENT

- Designing data-driven services and citizen-centric policies will make the citizens feel included in the process hence increasing the satisfaction level of the citizens.
- The Government of Khyber Pakhtunkhwa will ensure that venues for citizen feedback are incorporated into the services and information provided. Internal government silos will be broken down and data will be shared to enable a citizen-centered view of government services

MEASURES

- Citizen satisfaction with public services (RTS-notified services etc.)

OUTCOME #4 BETTER DECISION MAKING

- By leveraging internally and externally available data across departments and harnessing its information, it will achieve better decision making, enable real-time service delivery, and promote innovation through big data, data analysis, warehousing, and analytics program.
- Open Data portals offer a central location to collect publicly available data as a resource to support big data and analytics and therefore lead to evidence-based decision-making.
- Government-wide decisions and results are made accessible and understandable to citizens.

MEASURES

- Citizen understanding of government processes, procedures, and rules of business.
- Citizen engagements with public services.



OUTCOME #5 INCREASED COLLABORATION AND COORDINATION

- The increasing collaboration will help break down silos within the departments and lead to the creation of a better-aligned portfolio, programs, projects, interventions, and services.
- Coordination of initiatives will lead to increased citizen satisfaction and understanding and alleviate duplication of efforts.
- Reduced costs and efficiencies will be realized by aligning services and applying evidence-based decisions.

MEASURES

- Citizen and government employee feedback.
- Increased employee satisfaction and retention.



7. GUIDING PRINCIPLES

The Government recognizes the importance of effectively managing the release of government data to optimize the use and reuse of open data for the benefit of citizens. The Government of Khyber Pakhtunkhwa commits to the following International Open Data Charter principles:

The International Open Data Charter (ODC) is the product of an international collaboration developed to help governments maximize the potential of open data. The ODC sets priorities and benchmarks open data across the world. Khyber Pakhtunkhwa’s Open Government Data Strategy is anchored in the international principles defined by the ODC. This allows the Government of Khyber Pakhtunkhwa to measure itself on an international level and holds the Government of Khyber Pakhtunkhwa to the highest standard. The ODC’s six principles were used to guide the multi-stakeholder engagement and ultimately, the master plan for open government strategy.

| Principle | Definition |
|--|---|
| Open by Default | Free access to, and use of, open data is of significant value to society and the economy; hence, it should be open by default unless it compromises personal data or privacy rights or classified information |
| Timely and Comprehensive | To be of value, open data should be prioritized given the needs from users and the resources needed for publication, and it must be comprehensive, accurate, and of high quality |
| Accessible and Usable | Open data should be easily discoverable, widely accessible, and made available without any administrative barriers that would deter people from accessing it |
| Comparable and Interoperable | To be most effective and useful, open data should be available in structured and standardized formats that enable comparison within and across sectors, locations, service-oriented, citizen-demanded and overtime services |
| Improved Governance and Citizen Engagement | Open data strengthens trust in government by enhancing transparency around decision-making, increasing visibility into how society’s needs are being met, and empowering civic participation |
| Inclusive Development and Innovation | Governments must aim to enable everyone to understand and use open data effectively so benefits generated from it are not limited only to those with specific tools and resources |

International Open Data Charter, Principles, available at <http://opendatacharter.net/>, accessed 22 November 2019.

8. OBJECTIVES

- To Increase the international reputation of Khyber Pakhtunkhwa as a knowledgeable, progressive and data literate workforce, community and government.
- Developing a data-driven culture across public services with a lifecycle approach taken to data management and publication of data in an open and reusable format.
- Building a value-driven economy around Open Data by making high-value datasets publicly accessible.
- Stimulating innovation and economic growth, promoting transparency and efficiency in public administration through data usage and improving data quality informed by feedback from the citizens.
- Ensuring that datasets are in line with the technical framework to ensure data available on opendata.kp.gov.pk is of high quality and free to use and ensuring Khyber Pakhtunkhwa ranks optimally in international evaluations.
- Engaging with a broad community of stakeholders including businesses, researchers and academics, civil society actors, media and information professionals and others to promote and encourage the use of Open Data.
- Promoting awareness of Open Data and creating an environment where stakeholders engage and participate in data sharing interventions.
- Considering the potential for adding non-government data, which is considered valuable over time.



9. INTENDED BENEFITS

Data is recognized as a strategic and valuable asset. Potential social, economic and political benefits include:

- More transparency and accountability of government
- New opportunities for increased insights into data by combining open datasets and providing evidence to inform policy and improve public services.
- Increases data sharing and use across public services. Better data discipline and improved efficiencies within departments.
- Facilitates meaningful citizen participation and informed input into decision-making, policy development, and service design.
- Business innovation, creation, and efficiency leading to economic growth.
- Increases the international reputation of Khyber Pakhtunkhwa as a knowledgeable, progressive and data-literate workforce, community and government.
- Increases attractiveness of Khyber Pakhtunkhwa for investment by international and local data/information technology firms and organizations



10. CRITICAL SUCCESS FACTORS

1. Strong leadership and governance structures aligned with the Good Governance Strategy of Government.
2. Appropriate leadership and governance structures in place within government offices to ensure success. This includes the necessary support at senior level and the nomination of a dedicated focal person as an Open Data Liaison Officer in each department
3. Government offices to publish data of high quality underpinned by the technical framework and open data standards and aligned to international best practices to ensure cross-departmental interoperability
4. Implementation of the Open Government Data Strategy will require collaboration and cooperation between data producers (departments) and data users (citizens) to ensure that resources and efforts are targeted.
5. Capacity Building: the necessary supports and resources must be in place to drawdown technical support, training support and provide expertise as required to enable knowledge-sharing. This will be provided by Performance Management and Reforms Unit (PMRU), Office of the Chief Secretary, Government of Khyber Pakhtunkhwa.
6. Underpinned by outreach and engagement with stakeholders to ensure maximum data use and reuse

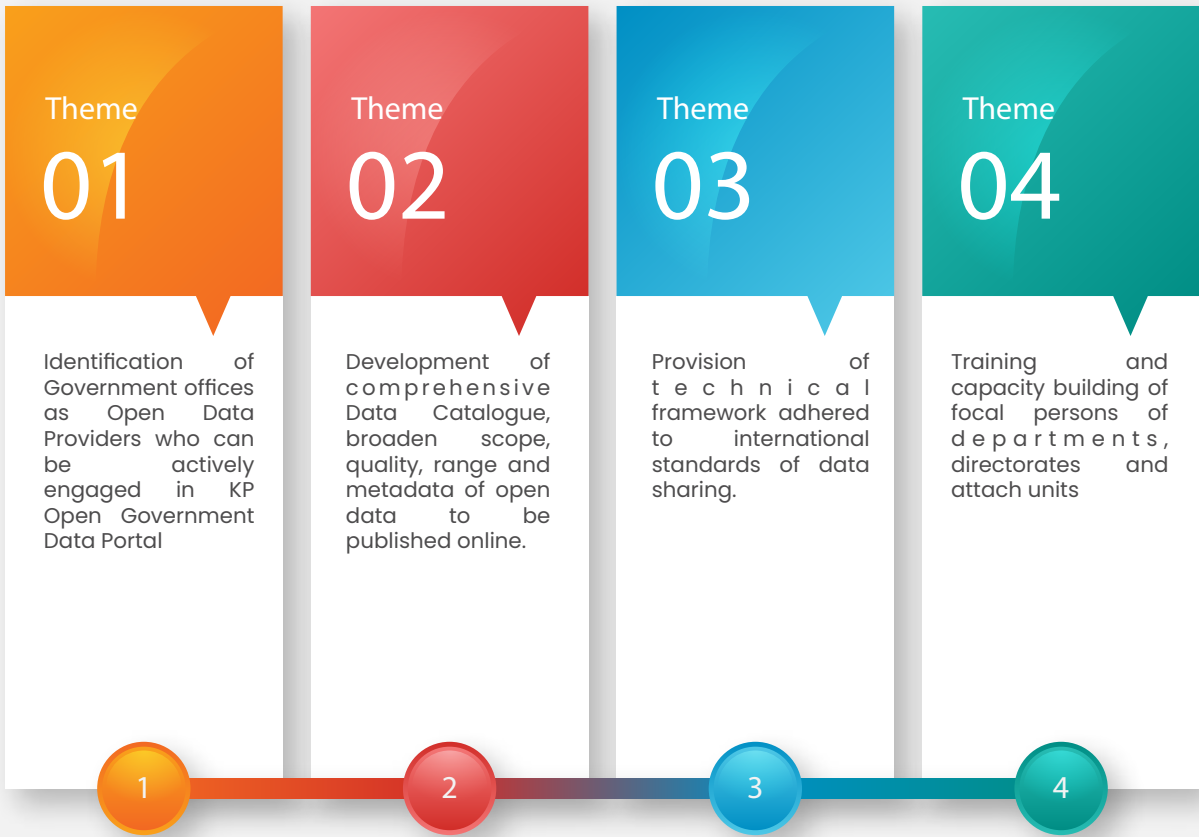
11. GOVERNANCE OF OPEN GOVERNMENT DATA

The data revolution draws upon many kinds of data. Not all data can be made into open data, but through existing principles for official data, balancing demand for data with respect for privacy and security is maintained. Open data approaches can help to put “transparency and openness”, “usability”, and “independence” principles of official data into practice. The following three types of data are available with Government.

1. **Closed data** is data that should not be shared with the general public. This includes Private data about individuals. Many valuable datasets are derived from personal data. Whilst it may be possible for aggregated and derived data to be shared, care must be taken to ensure that individual rights to privacy and control over their own data are not undermined and that personal data is managed according to international best practices.
2. **Shared data** is data that is made available to specific users, or for particular kinds of reuse.
3. **Open data** is data that is provided for unrestricted reuse. This is usually achieved through making it machine-readable, publishing it online, and providing a clear statement that gives anyone permission to reuse it. Anyone can use open data for anything, subject to relevant laws and regulations relating to responsible data use. The idea of “open by default” means that restrictions on the reuse of data should be clearly justified.

The Strategic Themes guiding the Open Data Initiative over the lifetime of the Strategy:

THEMES



12. TECHNICAL FRAMEWORK

A. NEED FOR OPEN GOVERNMENT DATA TECHNICAL

The objective of the Open Data Portal is to publish government data in a way that will make it more discoverable, accessible, interoperable and reusable. The Portal has been updated to support the publication of high-value datasets to meet demand and contribute to the achievement of real economic, social and democratic benefits for citizens, business and the public sector.

This technical framework supports the ongoing implementation of the Open Government Data Strategy and ensures that publication of datasets on the Open Data Portal available on opendata.kp.gov.pk, is done in a consistent, persistent and truly open manner. This is a living document that will be expanded upon as technologies and practices evolve.

This Technical Framework comprises five key components:

1. Publishing Open Government Data
2. Recommended Formats for Open Data
3. Recommended Metadata Schema for Open Data
4. Recommended Standards for Open Data
5. Unique Resource identifiers

B. PUBLISHING OPEN GOVERNMENT DATA

The Open Data Technical Framework sets out a planned and structured approach to the publication of datasets as Open Government Data. The Government, when considering publication of Open Data should take into account the value, potential for reuse, and contribution datasets can make to delivering better outcomes for citizens, businesses, and other government employees, and help improve evidence-based decision making by government offices. The decisions on publication of Open Government Data will be followed by Data Audits, which will be conducted in all departments over time. Data Audits are important as they form the basis for a planned and structured approach for making data as Open Data; taking into account the value, potential for re-use and contribution. The output of audits will facilitate publication of datasets on our open data portal, opendata.kp.gov.pk, Audits will also promote the effective management and use/sharing of information in departments and support the implementation of the Open Government Data Strategy. Audits will enable identification of:

- The extent and range of datasets that exist and are managed and maintained by Departments etc.
- The ranking of datasets in terms of their importance to the delivery of departmental objectives and the perceived gaps in useful data that might help the delivery of these objectives
- The potential for sharing datasets within the departments and the wider public sector organizations
- The potential for publication and making data available for reuse

C. RECOMMENDED FORMATES, METADATA, SCHEMA, STANDARDS

While data published in any format can be considered for Open Data if associated with an Open License, the type of data format used can have significant implications for the usability of the data. Under the Good Governance Strategy, government departments, etc. should publish their data in the most open way possible. One way to measure, the openness of the formats used is through the 5-star deployment scheme for Open Data. The greater the number of stars, the more reusable the data.

5-Star Open Data Scheme

For inclusion in the Open Data Portal, departments, etc. must publish data at a minimum of 3 Star Open Data, such as CSV, JSON or XML. However, it is encouraged that datasets are published in multiple formats, for example, 1 Star (e.g. PDF), 2 Star (e.g. Microsoft Excel) in addition to the required 3 Star (e.g. CSV). Further examples of formats are available here. All datasets on opendata.kp.gov.pk should be available in at least one of the following formats:

| General | Geospatial | Domain-Specific |
|----------------|-------------------|------------------------|
| CSV | GeoJSON | NetCDF |
| JSON | GML | Datex II |
| XML | KML | GTFS |
| ODF | WKT | JSON STAT |
| RDF | LAS | Ontologies, OWL |
| ODS | IFC | |
| | Shapefile | |
| | ASCII Grid | |

The Datasets may be published in multiple formats. Datasets not yet available in one of the recommended open formats should have a clear timeframe of when they will be available in an open format. The publication of data in open formats should be built into data publication processes of all departments, etc.

D. RECOMMENDED METADATA SCHEMA FOR OPEN DATA

In order to help realize the benefits of Open Data, departments etc. should make their data more searchable and usable. To achieve this, departments should provide precise descriptors about their datasets to help in the identification, location and retrieval of online resources by data-users. These descriptors are commonly known as “metadata”.

Metadata is the summary information describing the data, including the availability, nature and constituents of the data. It provides context about the data that helps users understand their meaning. Open Data requires a consistent approach to the publication of Open Data to ensure interoperability between datasets published by public bodies, at both national and international levels.

Accordingly, this Technical Framework recommends the adoption of a standardized Metadata Schema by public bodies, namely the W3C Data Catalog Vocabulary (DCAT). All Open Data must be associated with standardized metadata. DCAT will be adopted as the KP Open Data Metadata Schema, with appropriate geospatial values outlined. All datasets on opendata.kp.gov.pk will be accompanied by metadata compliant to **DCAT** (with the Geo extension, if appropriate to the dataset).

E. RECOMMENDED STANDARDS FOR OPEN DATA

Data standards also referred to as data models or data vocabularies ensure a common understanding of data content and what it describes to data users, and help facilitate the smooth exchange of data. Data standards help give a common meaning to data. This is especially important when data is being used by a third party, being integrated from different sources, or when data is being shared across public bodies. Data standards not only define the meaning of certain concepts but also how concepts relate to each other, which facilitates data interoperability.

When publishing Open Data, international standards defined by reputable standards organizations, such as ISO, the European Commission, W3C, IETF, OGC, and OASIS should be used if possible. If international standards are unavailable or unsuitable, use national standards. For specific topics such as geospatial, statistics, or health, use national standards as defined by the responsible organization (OSI, CSO, HIQA, etc.).

F. UNIQUE RESOURCE IDENTIFIERS

The technical framework sets out steps that will allow public bodies to achieve a minimum of three star Open Data. In the long term, however, the intention is to progress to greater levels of linked data (4 and 5 Star).

The use of Universal Resource Identifiers (URIs) is an important element of this longer- term approach to Open Data and will be tasked with developing a URI Strategy and agreeing on a URI pattern for using international experience and best practice.

The ongoing development of Open Data and the desire to increase its interoperability have led to an increased reliance on URIs as identifiers for a wide variety of concepts. URIs are valuable in that they can help distinguish data resources and facilitate unique data identification, comparison and linking. URIs can be used to identify anything from places and people to things and concepts.

13. KEY PERFORMANCE INDICATORS

Key indicators performance tracking is critical for maturing the culture of open government data. It will lead to increased oversight mechanisms; recognition of open data as a permanent component of the fabric of the province; and instituting policies. The following key performance indicators are designed to be measured on a quarterly basis. These KPIs will be monitored against government offices through good governance framework system by Performance Management and Reforms Unit (PMRU).

| Key Performance Indicator | Response (Yes, No) |
|---|---|
| Is it available online from the government in any form? | <input type="checkbox"/> <input type="checkbox"/> |
| Is the dataset provided in machine-readable and reusable formats? | <input type="checkbox"/> <input type="checkbox"/> |
| Is the machine-readable and reusable data available as a whole? | <input type="checkbox"/> <input type="checkbox"/> |
| Is the dataset available free of charge? | <input type="checkbox"/> <input type="checkbox"/> |
| Is the data openly licensed? | <input type="checkbox"/> <input type="checkbox"/> |
| Is the dataset up to date? | <input type="checkbox"/> <input type="checkbox"/> |
| Is the dataset being kept regularly updated? | <input type="checkbox"/> <input type="checkbox"/> |
| Was it easy to find information about this dataset? | <input type="checkbox"/> <input type="checkbox"/> |
| Are data identifiers provided for key elements in the dataset? | <input type="checkbox"/> <input type="checkbox"/> |

14. STRATEGIC THEMES – OPEN GOVERNMENT DATA CATALOGUE

To realize the value of open data, Khyber Pakhtunkhwa government needs to shift focus from solely a catalogue of open datasets targeting the developer community to a platform that makes open data accessible to a wider audience. Novel forms of engagement and dataset exploration will enable greater activation of open data, grow value creation, and meet the responsibility for inclusivity. A principle focus will be helping develop knowledge and tools needed to make use of data. The following tentative datasets will be collected from various departments against a set timeline and frequency. The new dataset will be added as per a continuous quality improvement spectrum. The addition and deletion of datasets will be a continuous activity and will be monitored over time.

Topic : Health, Health Department

| Data Sets | Frequency | Format | Category |
|---|------------------|---------------|---------------------|
| 1. Provincial Health Expenditure | Yearly | Numeric | Fiscal Transparency |
| a) Breakdown of Government Expenditure on health per capita. | Yearly | Numeric | Fiscal Transparency |
| 2. District Wise Health Facilities | Yearly | Numeric | Health |
| a) Hospitals (Title, Location, Type) | Yearly | Numeric | Health |
| b) DHQs (Title, Location) | Yearly | Numeric | Health |
| c) BHUs (Title, Location) | Yearly | Numeric | Health |
| d) Civil Dispensaries | Yearly | Numeric | Health |
| e) T.B Clinics | Yearly | Numeric | Health |
| f) R.H.Cs | Yearly | Numeric | Health |
| g) S.H.Cs | Yearly | Numeric | Health |
| h) M.C.H. Centers | Yearly | Numeric | Health |
| i) Health Professional Institutions | Yearly | Numeric | Economy |
| 3. District wise number of medical and para medical staff | Yearly | Numeric | Health |
| a) Doctors | Yearly | Numeric | Health |
| b) Radiologists | Yearly | Numeric | Health |
| c) Dental | Yearly | Numeric | Health |
| d) Surgeons | Yearly | Numeric | Health |
| e) Nurses | Yearly | Numeric | Health |
| f) Nurse/Dias/Dais | Yearly | Numeric | Health |
| g) Primary Health Technician | Yearly | Numeric | Health |
| h) (LHV's) | Yearly | Numeric | Health |
| i) LHWs | Yearly | Numeric | Health |
| j) Other Para Medical staff | Yearly | Numeric | Health |
| k) Number of Doctors in hospital (Specialty-wise) | Yearly | Numeric | Health |
| 4. District wise no. of registered private medical practitioners in KP (Gender-wise). | Yearly | Numeric | Health |
| a) Breakdown of specialist physicians registered | Yearly | Numeric | Health |
| 5. No. of Ambulances in KP | Yearly | Numeric | Health |
| 6. Food Establishment Inspections | Yearly | Numeric | Health |



| Topic: Literary, Primary, Secondary and Higher Education | | | |
|--|------------------|---------------|-----------------|
| Department: Elementary and Secondary Education Department, Higher Education Department | | | |
| Data Sets | Frequency | Format | Category |
| Ø Summary Statistics Regarding Number/Enrolment and Teaching Staff of Government Schools in Khyber Pakhtunkhwa, Urban/Rural | Yearly | Numeric | Education |
| 1. Literacy Ratios of Khyber Pakhtunkhwa | Yearly | Numeric | Education |
| 2. Literacy Ratios of Khyber Pakhtunkhwa & its Comparison with other Provinces and Pakistan | Yearly | Numeric | Education |
| 3. Gross Primary enrolment rate & literacy ratio of Pakistan by Provinces | Yearly | Numeric | Education |
| 4. Enrolment & Pressure Per Primary School of Pakistan by Provinces | Yearly | Numeric | Education |
| 5. Literacy-Population 10 years and older | Yearly | Numeric | Education |
| 6. Adult Literacy-Population 15 years and older | Yearly | Numeric | Education |
| 7. Participation Rates (%) of Primary, Middle & High Age Group Population of KP | Yearly | Numeric | Education |
| 8. District Wise Participation Rates (%) of Primary, Middle & High Level | Yearly | Numeric | Education |
| 9. Schools in Khyber Pakhtunkhwa (Listing) | Yearly | Numeric | Education |
| 10. District wise number of educational facilities in KP (Both Male & Female) | Yearly | Numeric | Education |
| a) District Wise Number of all Government Primary Schools by Gender in KP | Yearly | Numeric | Education |
| b) District Wise Number of all Government Primary Schools Non-Functional by Gender in KP | Yearly | Numeric | Education |
| c) District Wise Number of Government Middle Schools by Gender in KP | Yearly | Numeric | Education |
| d) District Wise Number of Government Middle Schools Non-Functional by Gender in KP | Yearly | Numeric | Education |
| e) District Wise Number of Government High Schools by Gender in KP | Yearly | Numeric | Education |
| f) District Wise Number of Government High Schools Non-Functional by Gender in KP | Yearly | Numeric | Education |
| g) District Wise Number of Government Higher Secondary Schools by Gender in KP | Yearly | Numeric | Education |
| h) District Wise Number of Government Degree Colleges in KP | Yearly | Numeric | Education |
| i) District Wise Number of Government Colleges of Technologies and Government Polytechnic Institutes in KP | Yearly | Numeric | Education |
| j) District wise No. of Govt. College of Management Sciences (GCMS) in KP | Yearly | Numeric | Education |



| | | | |
|---|--------|---------|-----------|
| k) District Wise Number of Government Technical & Vocational Centers in KP | Yearly | Numeric | Education |
| l) District-wise number of Girls Community Schools | Yearly | Numeric | Education |
| m) District-wise number of Science and IT Labs in Khyber Pakhtunkhwa | Yearly | Numeric | Education |
| n) District Wise Number of Madaris / Maktab Schools in Khyber Pakhtunkhwa | Yearly | Numeric | Education |
| o) District wise No. of Registered Unregistered Deeni Madaris in Khyber Pakhtunkhwa | Yearly | Numeric | Education |
| 11. District wise No. of enrolment in Educational Facilities in KP (Both Male/Female) | Yearly | Numeric | Education |
| a. District Wise Enrolment of Government All Primary Schools by Gender /Level in KP | Yearly | Numeric | Education |
| b. District Wise Enrolment of Government Middle Schools by Gender /Level in KP | Yearly | Numeric | Education |
| c. District Wise Enrolment of Government High Schools by Gender /Level in KP | Yearly | Numeric | Education |
| d. District Wise Enrolment of Government Higher Secondary Schools by Gender /Level in KP | Yearly | Numeric | Education |
| e. District Wise Enrolment of Inter level in Govt Degree Colleges by Gender /Level in KP | Yearly | Numeric | Education |
| f. District Wise Enrolment of Government Degree Colleges by Gender /Level in KP | Yearly | Numeric | Education |
| g. District Wise Number of Enrolment of Govt: Post Graduate Colleges in KP | Yearly | Numeric | Education |
| h. District Wise Enrolment of Government Colleges of Technologies and Government Polytechnic Institutes in KP | Yearly | Numeric | Education |
| i. District Wise Enrolment in Govt. Colleges of Commerce Management Sciences (GCCMS) in KP | Yearly | Numeric | Education |
| j. District Wise Enrolment of Government Technical & Vocational Centers of KP | Yearly | Numeric | Education |
| k. District Wise Number, Enrolment in Madaris/ Maktab Schools in KP | Yearly | Numeric | Education |
| 12. District wise No. of Teaching staff in Educational Facilities in KP (Both Male/Female) | Yearly | Numeric | Education |
| l. District Wise Teaching Staff of Government Primary Schools by Kind/ Gender in KP | Yearly | Numeric | Education |
| m. District Wise Teaching Staff of Government Middle Schools by Kind/Gender in KP | Yearly | Numeric | Education |
| n. District Wise Teaching Staff of Government High Schools by Kind/Gender in KP | Yearly | Numeric | Education |
| o. District Wise Teaching Staff of Government Higher Secondary Schools by Kind/Gender in KP | Yearly | Numeric | Education |



| | | | |
|---|--------|---------|-----------|
| p. District Wise Teaching Staff of Government Degree Colleges by Kind/Gender in KP | Yearly | Numeric | Education |
| q. District Wise Teaching Staff in Govt. Colleges of Technologies and Polytechnic in KP | Yearly | Numeric | Education |
| r. District Wise Teaching Staff in Govt. College of Management Sciences (GCMS) in KP | Yearly | Numeric | Education |
| s. District Wise Teaching Staff in Government Technical & Vocational Centers in KP | Yearly | Numeric | Education |
| t. District Wise Number of Teaching Staff of Madaris / Maktab Schools in KP | Yearly | Numeric | Education |
| u. District Wise Number of Enrolment of Govt: Post Graduate Colleges in Khyber Pakhtunkhwa | Yearly | Numeric | Education |
| 13. Number of Enrolment of Universities in Public Sectors of Khyber Pakhtunkhwa | Yearly | Numeric | Education |
| 14. Number of Teaching Staff of Universities in Public Sectors of Khyber Pakhtunkhwa | Yearly | Numeric | Education |
| 15. Number of Colleges & Enrolment of BS-4 years by Gender | Yearly | Numeric | Education |
| 16. District wise number of private Primary/Middle/High, Colleges and Universities in KP | Yearly | Numeric | Education |
| 17. District Wise Number of Enrolment in private Primary/Middle/High, Colleges and Universities in KP | Yearly | Numeric | Education |
| 18. District Wise Number of Teaching Staff in private Primary/Middle/High, Colleges and Universities in KP | Yearly | Numeric | Education |
| 19. District-wise number of students with disability in schools and colleges of Khyber Pakhtunkhwa | Yearly | Numeric | Education |
| 20. Amount of Scholarship provided to students in Schools and Colleges of Khyber Pakhtunkhwa | Yearly | Numeric | Education |



| Topic: Manufacturing, Industry, Food and Agriculture | | | |
|--|------------------|---------------|-----------------|
| Department: Agriculture, Food, Industry and Labor Department | | | |
| Data Sets | Frequency | Format | Category |
| 1. Index of industrial production in the Khyber Pakhtunkhwa | Yaerly | Numeric/Text | Economy |
| 2. Wheat support/procurement prices v/s production | Yaerly | Numeric/Text | Agriculture |
| 3. District wise Flour mills in Khyber Pakhtunkhwa | Yaerly | Numeric/Text | Economy |
| 4. District wise Sugar mills in Khyber Pakhtunkhwa | Yaerly | Numeric | Economy |
| 5. District-Wise Food Storage Accommodation in Govt: Godowns in Khyber Pakhtunkhwa | Yaerly | Numeric | Food |
| 6. Month-Wise Stock position of Wheat in Provincial Reserves & Releases from Govt. Godowns | Yaerly | Numeric | Food |
| 7. District wise Wheat stock position in KP, during the crop year | Yaerly | Numeric | Food |
| 8. District wise Wheat availability and releases in Khyber Pakhtunkhwa | Yaerly | Numeric | Food |
| 9. District wise Wheat production, availability & requirement of Khyber Pakhtunkhwa | Yaerly | Numeric | Food |
| 10. District wise Rice production, availability & requirement of Khyber Pakhtunkhwa | Yaerly | Numeric | Food |
| 11. Index Numbers of Wholesale Prices by Commodity Group Pakistan | Yaerly | Numeric | Food |
| 12. Combined Consumer Price Index Numbers by Commodity Group Pakistan | Yaerly | Numeric | Food |



| Topic: Law and Order | | | |
|---|------------------|---------------|----------------------|
| Department: Home Department, Police Department | | | |
| Data Sets | Frequency | Format | Category |
| 1. District wise No of Police Stations/Police Posts in Khyber Pakhtunkhwa | Yearly | Numeric/Text | Right to Information |
| 2. District wise No of Prisons in Khyber Pakhtunkhwa | Yearly | Numeric/Text | Right to Information |
| 3. District wise No of Traffic Control Offices in Khyber Pakhtunkhwa | Yearly | Numeric/Text | Right to Information |
| 4. District wise No of Traffic Warden Offices in Khyber Pakhtunkhwa | Yearly | Numeric/Text | Right to Information |
| 5. Category wise No of Arm Licenses Issued | Yearly | Numeric/Text | Right to Information |
| 6. District-wise No of Arm Licenses issued in Khyber Pakhtunkhwa | Yearly | Numeric/Text | Right to Information |



| Topic: Administrative Setup, Boundaries, Maps, Departments: District Administration, SMBR, P&D, Local Government, E&SE, HED | | | |
|--|------------------|---------------|----------------------|
| Data Sets | Frequency | Format | Category |
| 1. List of Administrative Units, Departments, Directorates, Attach Units in KP | Yearly | Text | Right to Information |
| 2. List of Districts, Divisions in KP | Yearly | Text | Right to Information |
| 3. List of Tehsil in KP | Yearly | Text | Right to Information |
| 4. List of Union Council in KP | Yearly | Text | Right to Information |
| 5. List of VC/NC in KP | Yearly | Text | Right to Information |
| 6. List of Police Stations in KP | Yearly | Text | Right to Information |
| 7. List of Government Colleges in KP | Yearly | Text | Right to Information |
| 8. List of University in KP | Yearly | Text | Right to Information |
| 9. List of Government Schools (All types) in KP | Yearly | Text | Right to Information |
| 10. List of Hospitals (All types), DHQs, BHUs in KP | Yearly | Text | Right to Information |
| 11. List of Religious places (Minorities) in KP | Yearly | Text | Right to Information |
| 12. List of National Parks in KP | Yearly | Text | Right to Information |
| 13. List of geo-coded boundaries of Districts, Division and Tehsils of KP | Yearly | Text | Right to Information |
| 14. List of Provincial Constituencies in KP | Yearly | Text | Right to Information |
| 15. No of Housing facility by type (urban, rural) | Yearly | Text | Right to Information |
| 16. List of Mineral in KP | Yearly | Text | Right to Information |
| 17. List of Industrial Estates, Industry in KP | Yearly | Text | Right to Information |
| 18. Population of KP | Yearly | Text | Right to Information |
| 19. Crops (Category-wise) of KP | Yearly | Text | Right to Information |
| 20. Land utilization of KP | Yearly | Text | Right to Information |
| 21. Land use intensity (%) | Yearly | Text | Right to Information |
| 22. Cropping intensity (%) | Yearly | Text | Right to Information |
| 23. Population per cultivated hectare (persons) | Yearly | Text | Right to Information |
| 24. Population per irrigated hectare (persons) | Yearly | Text | Right to Information |
| 25. Roads of KP (Total, Black topped, singled) | Yearly | Text | Right to Information |
| 26. Road per Sq. Km of Area | Yearly | Text | Right to Information |
| 27. Registered vehicle (Buses, Mini Buses, Motor Cars, Jeeps & Taxis, Trucks (Public/Private) | Yearly | Text | Right to Information |
| 28. Fuel and Power (Gas Consumption, Electricity Connection, Electricity Units sold, number of electrified villages (cumulative) | Yearly | Text | Right to Information |
| 29. Mineral Production of KP | Yearly | Text | Right to Information |



| Topic: Higher Education, Departments: Higher Education Department | | | |
|--|------------------|---------------|-----------------|
| Data Sets | Frequency | Format | Category |
| 1. District-wise colleges in Khyber Pakhtunkhwa | Yearly | Numeric | Education |
| 2. District-wise (Gender-wise) colleges in Khyber Pakhtunkhwa | Yearly | Numeric | Education |
| 3. Gender Wise Number Of Students In All Colleges Of Khyber Pakhtunkhwa | Yearly | Numeric | Education |
| 4. Gender Wise Number Of Students In Different Discipline In All Colleges Of KP | Yearly | Numeric | Education |
| 5. Discipline-wise number of students in colleges of Khyber Pakhtunkhwa | Yearly | Numeric | Education |
| 6. Faculty-wise number of students in colleges of Khyber Pakhtunkhwa | Yearly | Numeric | Education |
| 7. District-wise number of staff in colleges of Khyber Pakhtunkhwa | Yearly | Numeric | Education |
| 8. District-wise number of MS, PhD in colleges of Khyber Pakhtunkhwa | Yearly | Numeric | Education |
| 9. District-wise number of Science and IT labs in colleges of Khyber Pakhtunkhwa | Yearly | Numeric | Education |
| 10. District-wise number of Technical Labs (Civil, Chemical, etc) | Yearly | Numeric | Education |
| 11. Total Number of offices In All Colleges of Khyber Pakhtunkhwa | Yearly | Numeric | Education |
| 12. Total Number of Labs In All Government Colleges of Khyber Pakhtunkhwa | Yearly | Numeric | Education |
| 13. Total Number of Class Rooms In Government Colleges of Khyber Pakhtunkhwa | Yearly | Numeric | Education |
| 14. District Wise Number of Vehicles In Government Colleges of Khyber Pakhtunkhwa | Yearly | Numeric | Education |
| 15. District Wise Budget Report of All Government Colleges In KP each year | Yearly | Numeric | Education |
| 16. Total Number of Wash Rooms Available In Government Colleges Of KP | Yearly | Numeric | Education |
| 17. Total Number of Books In Library Available In All Colleges Of Khyber Pakhtunkhwa | Yearly | Numeric | Education |
| 18. Total Number of Hostel and Capacity Of Student In Government Colleges Of KP | Yearly | Numeric | Education |
| 19. District-wise college-wise results (%) | Yearly | Numeric | Education |
| 20. List Of All Public Libraries In Khyber Pakhtunkhwa | Yearly | Numeric | Education |
| 21. List Of Public Sector Universities In Khyber Pakhtunkhwa | Yearly | Numeric | Education |
| 22. Detail Of Funds Provided To Public Sector Universities each year | Yearly | Numeric | Education |
| 23. No of Scholarships (financial value) provided to students | Yearly | Numeric | Education |



| Topic: Natural Resources, Minerals, Departments: Agriculture, Forest, Minerals Development Department | | | |
|--|------------------|---------------|-----------------|
| Data Sets | Frequency | Format | Category |
| 1. Minerals production statistics in KP | Yearly | Numeric/Text | Economy |
| 2. District wise Metallic Minerals including Precious Metals of KP | Yearly | Numeric/Text | category |



| Topic: Zakat, Social Protection, People with Special Needs, Zakat, Ushr, Social Welfare Education and Women Empowerment Department. | | | |
|--|------------------|---------------|----------------------|
| Data Sets | Frequency | Format | Category |
| 1. No of Vocational Training Centers for Mustahiq-e-Zakat for their permanent rehabilitation | Yearly | Numeric | Employment |
| 2. Number of Social Welfare Institutions in KP, by Type including Women & Children | Yearly | Numeric | Employment |
| 3. Number of Existing Social Welfare Services for Women & Children in Public Sector in KP | Yearly | Numeric | Employment |
| 4. Number of Existing Social Welfare Services for Women and Children in the Private Sector in KP | Yearly | Numeric | Employment |
| 5. No of Zakat Offices in KP | Yearly | Numeric | Right to Information |
| 6. No of Local Zakat Committee in KP | Yearly | Numeric | Citizen Engagement |
| 7. District-wise no of Orphanages, Institution of Blinds, Deaf and Dumb, Shelter home etc | Yearly | Numeric | Social Welfare |
| 8. District-wise no of Ushr collected | Yearly | Numeric | Usher |
| 9. District-wise no of Scholarship provided (Mora, Education etc) | Yearly | Numeric | Education |
| 10. District-wise Disbursement of Zakat funds to National and other recognized Institutions | Yearly | Numeric | Social Welfare |
| 11. District-wise PWDS Registered | Yearly | Numeric | Social Welfare |
| 12. District-wise Number of appliances provided to PWDs | Yearly | Numeric | Social Welfare |
| 13. District-wise Financial Assistance provided to PWDS | Yearly | Numeric | Social Welfare |
| 14. District-wise Number of awareness campaigns conducted for persons with disability | Yearly | Numeric | Social Welfare |
| 15. District-wise No of Children Trained in Mine Risk | Yearly | Numeric | Social Welfare |
| 16. District-wise Children Birth registration | Yearly | Numeric | Social Welfare |
| 17. District-wise No of Children Provided recreational facilities with sports items | Yearly | Numeric | Social Welfare |
| 18. District-wise No of Children acquired protection skills against violence | Yearly | Numeric | Social Welfare |
| 19. District-wise Children at risk registered | Yearly | Numeric | Social Welfare |
| 20. District-wise Children Provided Psychological & Social support | Yearly | Numeric | Social Welfare |
| 21. District-wise Child Protection Committees established | Yearly | Numeric | Social Welfare |
| 22. District-wise Child Protection cluster Committees Established | Yearly | Numeric | Social Welfare |
| 23. District-wise Centers for Detoxification & Rehabilitation for Drug Addicts | Yearly | Numeric | Social Welfare |
| 24. District-wise Sarkari Sarai Rehabilitated | Yearly | Numeric | Social Welfare |



| | | | |
|--|--------|---------|--------------------|
| 25. District-wise Panahgah established | Yearly | Numeric | Social Welfare |
| 26. District-wise Voluntary Social Welfare Agencies registered | Yearly | Numeric | Social Welfare |
| 27. District-wise Senior Citizens Registered | Yearly | Numeric | Social Welfare |
| 28. District-wise Transgender Registered | Yearly | Numeric | Social Welfare |
| 29. District-wise Destitute Students provided stipend (LWMF) | Yearly | Numeric | Social Welfare |
| 30. District-wise Patients provide, surgery , free medical treatment, disability patients (LWMF) | Yearly | Numeric | Social Welfare |
| 31. District-wise Adoptive Supportive Equipments Paraplegic (LWMF) provided | Yearly | Numeric | Social Welfare |
| 32. District-wise Darul Amans/Women Crisis Centers Rehabilitated | Yearly | Numeric | Social Welfare |
| 33. District-wise Sewing machine provided to Destitute Women | Yearly | Numeric | Social Welfare |
| 34. District-wise Skill Development Centers for deserving orphans (Female) | Yearly | Numeric | Social Welfare |
| 35. District-wise Skill Development Centers for deserving orphans | Yearly | Numeric | Social Welfare |
| 36. District-wise District Committee established under the KP Provincial Commission on the status of Women | Yearly | Numeric | Social Welfare |
| 37. Number of Women Organizations | Yearly | Numeric | Citizen Engagement |



| Topic: Land Revenue, Land Use, Land Tax, Department: Board of Revenue | | | |
|--|------------------|---------------|----------------------|
| Data Sets | Frequency | Format | Category |
| 1. District-wise No of Moza's | Yearly | Numeric | Right to Information |
| 2. District-wise No of Patwar khanas | Yearly | Numeric | Right to Information |
| 3. District-wise Total No of Disposed-off Cases | Yearly | Numeric | Right to Information |
| 4. District-wise no of mutations in Khyber Pakhtunkhwa | Yearly | Numeric | Right to Information |
| 5. District-wise no of Gardawari/ Kanungoi | Yearly | Numeric | Right to Information |
| 6. District-wise Recovery of land Tax/AIT | Yearly | Numeric | Revenue & taxation |
| 7. District-wise Land Acquisition cases (In Progress, Disposed off) | Yearly | Numeric | Right to Information |



| Topic: Industries | | | |
|---|------------------|---------------|-----------------|
| Department: Industry Department | | | |
| Data Sets | Frequency | Format | Category |
| 1. District-wise No. of Training in two streams i.e. Technical Education and Vocational Training Provided | Yearly | Numeric | Economy |
| 2. District-wise No. of registration of Essential Personnel through Employment Exchange | Yearly | Numeric | Economy |
| 3. District-wise list of Firms registered under Partnership Act 1932. | Yearly | Numeric | Economy |
| 4. District-wise No. of list of Societies, Registered/Renewed under Societies Registration Act, 1860. | Yearly | Numeric | Economy |
| 5. District-wise No. of list of consumer related cases disposed-off by Assistant Director Consumer Protection Council and Consumer Protection Courts under Consumer Protection Act, 1997. | Yearly | Numeric | Economy |
| 6. District-wise No. of list of certificate of registration/renewal of Stone Crushers issued under Finance Act 1995 and Rules 1998. | Yearly | Numeric | Economy |
| 7. District-wise No. of list of Registration/Renewal certificate for Boilers installed in factories issued under Boiler & Pressure Vessels Act, 2016. | Yearly | Numeric | Economy |
| 8. District-wise No. of Woodworking Centers | Yearly | Numeric | Economy |
| 9. District-wise No. of Gem stone Training established | Yearly | Numeric | Economy |
| 10. District-wise No. of Industrial Estates established | Yearly | Numeric | Economy |
| 11. Sugar Production and its Disposal in KP | Yearly | Numeric | Economy |
| 12. District Wise Loans Sanctioned by I.D.B.P in KP | Yearly | Numeric | Economy |
| 13. District Wise Loans Disbursed by I.D.B.P in KP | Yearly | Numeric | Economy |
| 14. District Wise Loans Sanctioned and Disbursed by NIB in KP | Yearly | Numeric | Economy |
| 15. Private Sector Loans Sanctioned & Disbursed by S.I.D.B in KP | Yearly | Numeric | Economy |
| 16. District Wise Total No. of Registered Industrial Units, Running & Closed, in KP | Yearly | Numeric | Economy |
| 17. industries Classified by No. of Running Units in KP | Yearly | Numeric | Economy |
| 18. District-wise Summary Statistics by Industry, Major Group and Industries, KP | Yearly | Numeric | Economy |
| 19. List of Beverage Industries in KP | Yearly | Numeric | Economy |
| 20. List of Cement Industries in KP | Yearly | Numeric | Economy |
| 21. List of Ceramics Industries in KP | Yearly | Numeric | Economy |
| 22. List of Cigarette Industries in KP | Yearly | Numeric | Economy |
| 23. List of Cotton Textile Industries in KP | Yearly | Numeric | Economy |
| 24. List of Electric Bulb Industries in KP | Yearly | Numeric | Economy |
| 25. List of Fertilizer Industries in KP | Yearly | Numeric | Economy |
| 26. List of Matches Industries in KP | Yearly | Numeric | Economy |
| 27. List of Paper & Paper Board Industries in KP | Yearly | Numeric | Economy |



| | | | |
|---|--------|---------|---------|
| 28. List of Sugar Industries in KP | Yearly | Numeric | Economy |
| 29. List of Vegetable Ghee Industries in KP | Yearly | Numeric | Economy |
| 30. List of Woolen Industries in KP | Yearly | Numeric | Economy |



| Topic: Roads and Communications Network Communication and Works | | | |
|---|------------------|---------------|---------------------------|
| Data Sets | Frequency | Format | Category |
| 1. District Wise Road in Kilometer in KP | Yearly | Numeric | Transport & Communication |
| 2. District wise High Types roads in KP | Yearly | Numeric | Transport & Communication |
| 3. District wise Low types roads in KP | Yearly | Numeric | Transport & Communication |
| 4. Road Per Sq. Km of Area | Yearly | Numeric | Transport & Communication |
| 5. District wise NHA, PKHA Roads in KP | Yearly | Numeric | Transport & Communication |
| 6. Metaled Roads Length (Actual) by Type Zone and District | Yearly | Numeric | Transport & Communication |
| 7. Expenditure on Construction and Maintenance of Roads in KP by District | Yearly | Numeric | Transport & Communication |
| 8. District wise number of government buildings constructed by type, category and feature | Yearly | Numeric | Transport & Communication |
| 9. District wise number of bridges, fly-overs in KP | Yearly | Numeric | Transport & Communication |



| Topic : Finance and Planning | | | |
|---|------------------|---------------|----------------------|
| Departments : Finance, P&D | | | |
| Data Sets | Frequency | Format | Category |
| 1. Abstract of A.D.Ps of Khyber Pakhtunkhwa | Yearly | Text | Right to Information |
| 2. Sector-wise Detail of Development Expenditure of Khyber Pakhtunkhwa | Yearly | Text | Right to Information |
| 3. Current Revenue Expenditure of Khyber Pakhtunkhwa | Yearly | Text | Fiscal Transparency |
| 4. Estimated Expenditure Summary of Khyber Pakhtunkhwa | Yearly | Text | Fiscal Transparency |
| 5. Estimated Receipts and Expenditure summary of Khyber Pakhtunkhwa by Department | Yearly | Text | Fiscal Transparency |
| 6. Details of General Revenue Receipts of Khyber Pakhtunkhwa | Yearly | Text | Fiscal Transparency |
| 7. District Wise Number of Operational Scheduled Bank Branches in Khyber Pakhtunkhwa | Yearly | Text | Right to Information |
| 8. Number of ADP Schemes by Type (Local, Foreign funded) | Yearly | Text | Right to Information |
| 9. Number of Schemes initiated via PPP | Yearly | Text | Right to Information |
| 10. Number of Donor Agencies contributing ADP | Yearly | Text | Right to Information |
| 11. Revenue generated in Khyber Pakhtunkhwa by own source revenue, federal govt. assisted | Yearly | Text | Revenue & Taxation |
| 12. Number of Federally Aided Projects | Yearly | Text | Right to Information |
| 13. Sector-wise Throw forward | Yearly | Text | Fiscal Transparency |
| 14. Sector-wise summary | Yearly | Text | Fiscal Transparency |
| 15. Sector-Wise Local & Foreign Aid | Yearly | Text | Fiscal Transparency |
| 16. Sector-sub sector wise ongoing/new programme | Yearly | Text | Fiscal Transparency |
| 17. Sector-wise summary of foreign assistance | Yearly | Text | Fiscal Transparency |
| 18. Donor-wise summary of foreign assistance | Yearly | Text | Fiscal Transparency |



| Topic: Air Quality, Forests, Wildlife, Environment | | | |
|--|------------------|---------------|---------------------------------|
| Department: Forestry, Environment & Wildlife Department | | | |
| Data Sets | Frequency | Format | Category |
| 1. District wise Forest Area by Enactment in Khyber Pakhtunkhwa | Yearly | Numeric | Environment & Natural Resources |
| 2. District wise Forest Area by Legal Categories in Khyber Pakhtunkhwa | Yearly | Numeric | Environment & Natural Resources |
| 3. District wise Forest Area Including Private Plantation | Yearly | Numeric | Environment & Natural Resources |
| 4. Timber Produced by the Forest Department in Khyber Pakhtunkhwa | Yearly | Numeric | Environment & Natural Resources |
| 5. Statement Showing Revenue Realized by Khyber Pakhtunkhwa Forest Department | Yearly | Numeric | Revenue & Taxation |
| 6. Statement Showing Expenditure of Khyber Pakhtunkhwa, Forest Department | Yearly | Numeric | Fiscal Transparency |
| 7. Details of Plants Distributed and Planted in Khyber Pakhtunkhwa | Yearly | Numeric | Fiscal Transparency |
| 8. Details of Nurseries and Plantation done under Non-Development Budget in Khyber Pakhtunkhwa | Yearly | Numeric | Fiscal Transparency |
| 9. Development of Designated Forests Carbon Stock Assessment for REDD+ and Promotion of Carbon Credit Marketing in Khyber Pakhtunkhwa. | Yearly | Numeric | Environment & Natural Resources |
| 10. Region-wise tree planted under Billion Tree Afforestation Project | Yearly | Numeric | Fiscal Transparency |
| 11. Number of Fire forest cased in Khyber Pakhtunkhwa | Yearly | Numeric | Right to Information |
| 12. Carbon Stock Assessment of Forests of Khyber Pakhtunkhwa. | Yearly | Numeric | Environment |
| 13. Wildlife Surveys (Area in hectare) | Yearly | Numeric | Environment & Natural Resources |
| 14. Wildlife Sanctuaries maintained (area in hectare) | Yearly | Numeric | Environment & Natural Resources |
| 15. Legal notices issued to violators/non-compliance entities | Yearly | Numeric | Environment & Natural Resources |
| 16. Flora and Fauna of Khyber Pakhtunkhwa | Yearly | Text | Environment & Natural Resources |
| 17. District wise number of wildlife by species and type | Yearly | Numeric | Environment & Natural Resources |



| | | | |
|--|--------|---------|---------------------------------|
| 18. Urban Forestry Plantation drives for Schools, Universities, Roadsides, Hotels, Canal side, Plazas, Hostels, Petrol Pumps, Railway tracks etc | Yearly | Numeric | Citizen Engagement |
| 19. Raising of forest nurseries (area in acres) | Yearly | Numeric | Environment & Natural Resources |
| 20. Raising afforestation (area in acres) | Yearly | Numeric | Environment & Natural Resources |
| 21. Direct sowing (on area in acres) | Yearly | Numeric | Environment & Natural Resources |
| 22. Raising linear plantation (area in Km) | Yearly | Numeric | Environment & Natural Resources |
| 23. Demarcation of designated forests (area in acres) | Yearly | Numeric | Environment & Natural Resources |
| 24. Natural regeneration (area in acres) | Yearly | Numeric | Environment & Natural Resources |
| 25. Seedling Distribution among Farmers (No. In Millions) | Yearly | Numeric | Citizen Engagement |
| 26. Number of trainings to farmers in art of apiculture / medical plants | Yearly | Numeric | Citizen Engagement |
| 27. Range management(area in acres) | Yearly | Numeric | Environment & Natural Resources |
| 28. Establishment of demonstration plots of saffron plants (04 canal each) | Yearly | Numeric | Environment & Natural Resources |
| 29. Farm Forestry (No. of plants in millions) | Yearly | Numeric | Environment & Natural Resources |
| 30. NTFP and Range Land Surveys (No) | Yearly | Numeric | Environment & Natural Resources |
| 31. Establishment of Medicinal Plants and NTFP's conservation Areas(in Acre) | Yearly | Numeric | Environment & Natural Resources |
| 32. Honey Bee Keeping Enterprises (in no) | Yearly | Numeric | Environment & Natural Resources |
| 33. Village Development Councils (VDCs) | Yearly | Numeric | Citizen Engagement |
| 34. National parks in Khyber Pakhtunkhwa | Yearly | Numeric | Environment & Natural Resources |
| 35. National parks in Khyber Pakhtunkhwa | Yearly | Numeric | Environment & Natural Resources |



| | | | |
|--|--------|---------|---------------------------------|
| 36. Private game reserve maintained (area in hectare) | Yearly | Numeric | Environment & Natural Resources |
| 37. Community game reserve maintained (area in hectare) | Yearly | Numeric | Environment & Natural Resources |
| 38. Industrial units monitoring for National Environmental Quality Standards NEQs | Yearly | Numeric | Environment |
| 39. No. Drinking water samples monitoring for standards | Yearly | Numeric | Environment |
| 40. Number of new projects screened for environmental assessment (EIA) | Yearly | Numeric | Environment |
| 41. Permits/license issued for import of hazard waste | Yearly | Numeric | Environment |
| 42. Forestry graduates enrolled | Yearly | Numeric | Employment / Education |
| 43. Research surveys conducted | Yearly | Numeric | Environment |
| 44. Record of Meteorological data | Yearly | Numeric | Environment |
| 45. Number of tree/Grasses/silkworm seeds collected(in Kg/Packets) | Yearly | Numeric | Environment |
| 46. Number of experimental nurseries/trails/demonstration plot maintained | Yearly | Numeric | Environment |
| 47. Number of districts where Carbon Stock Assessment of forests performed | Yearly | Numeric | Environment |
| 48. No. of Capacity building of Various stakeholders (conduct of trainings , seminars etc) | Yearly | Numeric | Environment |
| 49. Preparation of GIS Maps for land use and Forest cover assessment | Yearly | Numeric | Environment |
| 50. Synthesis of Bi-Voltine Hybrid Silkworm strains | Yearly | Numeric | Environment |
| 51. Development of Integrated Pest Management of Major Forest Pests | Yearly | Numeric | Environment |
| 52. Testing & evaluation of different wood species(No) | Yearly | Numeric | Environment |
| 53. Number of assessment for Biodiversity (Lepidoptera) | Yearly | Numeric | Environment |
| 54. Number of botanical pesticides screened | Yearly | Numeric | Environment |
| 55. Number of research publications/books | Yearly | Numeric | Environment |
| 56. Publishing of News letter (no) | Yearly | Text | Environment |
| 57. Publishing of Annual report | Yearly | Text | Environment |
| 58. Preservation of Germplasm | Yearly | Numeric | Environment |
| 59. Volume of waste generated/recycled | Yearly | Numeric | Environment |



| Topic: Population, Labor | | | |
|---|------------------|---------------|-----------------|
| Department: Population Welfare, Labor Department | | | |
| Data Sets | Frequency | Format | Category |
| 1. % distribution of population by age, Gender, literacy and level of education in KP (Rural & Urban) | Yearly | Numeric | Population |
| 2. % distribution of population (10 years duration) by age, Gender and marital status: in KP (Rural & Urban) | Yearly | Numeric | Population |
| 3. % distribution of total population and that of (10 years duration) by age, Gender, area and nature of activity in KP | Yearly | Numeric | Population |
| 4. % distribution of civilian labour force (10 years duration) by age, Gender, area and nature of activity in KP | Yearly | Numeric | Population |
| 5. % distribution of total population and that of (10 years duration) by age, Gender, area and nature of activity (augmented labour force): KP | Yearly | Numeric | Population |
| 6. % distribution of civilian labour force (10 years duration) by age, Gender, area and nature of activity (augmented labour force): KP | Yearly | Numeric | Population |
| 7. % distribution of population (10 years duration) by level of education, Gender and nature of activity: KP, Rural & Urban | Yearly | Numeric | Population |
| 8. % distribution of population (10 years duration) by migration status, Gender, area and KP | Yearly | Numeric | Population |
| 9. % distribution of migrant population (10 years duration) by place of present and previous residence, area, Gender and KP. | Yearly | Numeric | Population |
| 10. % distribution of migrant population (10 years duration) by place of present and previous residence, area, Gender and KP. | Yearly | Numeric | Population |
| 11. % distribution of migrant population (10 years duration) by main reasons of migration, age, Gender and area. | Yearly | Numeric | Population |
| 12. %, distribution of migrant employed persons (10 years duration) by employment status, number of hours worked during the reference week and Gender. | Yearly | Numeric | Population |
| 13. Labour force participation rates and unemployment rates by age, Gender and area: KP | Yearly | Numeric | Population |
| 14. Labour force participation rates and unemployment rates by age, Gender and area : KP (Augmented labour force) | Yearly | Numeric | Population |
| 15. % distribution of employed persons (10 years duration) by major industry division, Gender and area | Yearly | Numeric | Population |
| 16. % distribution of employed persons (10 years duration) by major occupation groups, Gender and area | Yearly | Numeric | Population |
| 17. % distribution of employed persons (10 years duration) by employment status, number of hours worked during the reference week and Gender, Rural & Urban | Yearly | Numeric | Population |



| | | | |
|---|--------|---------|------------|
| 18. % distribution of employed persons (10 years duration) by major industry divisions, occupation groups and Gender, Rural & Urban | Yearly | Numeric | Population |
| 19. % distribution of employed persons (10 years duration) by major sectors of employment, Gender, area, Pakistan and KP | Yearly | Numeric | Population |
| 20. % distribution of employed persons (10 years duration) and over engaged in informal sector by major industry divisions, Gender and area | Yearly | Numeric | Population |
| 21. % distribution of employed persons (10 years duration) and over engaged in informal sector by major occupation groups, Gender and area | Yearly | Numeric | Population |
| 22. % distribution of employed persons (10 years duration) and over engaged in informal sector by employment status, Gender, area, KP | Yearly | Numeric | Population |
| 23. % distribution of under employed persons (i.e. those who worked less than 35 hours during the reference week and were available/seeking for alternative or additional work) by employment status, Gender, area and KP | Yearly | Numeric | Population |
| 24. % distribution of underemployed persons (i.e. those who worked less than 35 hours during the reference week and were available/seeking for alternative or additional work) by age, area and Gender, KP | Yearly | Numeric | Population |
| 25. % distribution of underemployed persons (i.e. those who worked less than 35 hours during the reference week and were available/seeking for alternative or additional work) by area, gender and level of education, KP | Yearly | Numeric | Population |
| 26. % distribution of employed persons (10 years duration) and over who worked less than 35 hours during the reference week by reasons, Gender and KP: | Yearly | Numeric | Population |
| 27. % distribution of employed persons (10 years duration) and over suffered by status of occupational injuries/diseases by area, Gender and KP | Yearly | Numeric | Population |
| 28. % distribution of employed persons (10 years duration) and over suffered occupational injuries/diseases by major industry division, Gender and area: KP | Yearly | Numeric | Population |
| 29. % distribution of employed persons (10 years duration) and over suffered occupational injuries/diseases by major occupation groups, Gender and area: KP | Yearly | Numeric | Population |
| 30. % distribution of employed persons (10 years duration) and over suffered occupational injuries/diseases by employment status, KP, Gender and area | Yearly | Numeric | Population |
| 31. % distribution of employed persons (10 years duration) and over suffered occupational injuries/diseases by type of treatment received, Gender, area and KP | Yearly | Numeric | Population |
| 32. % Distribution of unemployed persons (10 years duration) and over who were not available for work due to certain reasons by Gender, area and KP | Yearly | Numeric | Population |



| | | | |
|--|--------|---------|------------|
| 33. % distribution of unemployed persons (10 years duration) by age, Gender, level of education: in KP, Rural & Urban | Yearly | Numeric | Population |
| 34. % distribution of unemployed persons with previous experience of work by major occupation groups, Gender, level of education: in KP, Rural & Urban | Yearly | Numeric | Population |
| 35. % distribution of population (10 years duration) by Gender, marital status and nature of activities: KP, Rural & Urban | Yearly | Numeric | Population |
| 36. % distribution of employees (10 years duration) by average monthly payment categories, Gender in KP | Yearly | Numeric | Population |
| 37. % distribution of employees by wage groups, major industry and Gender. | Yearly | Numeric | Population |
| 38. % distribution of employees by wage groups, major occupational groups and Gender. | Yearly | Numeric | Population |
| 39. Mean hours worked during the reference week, Gender, area | Yearly | Numeric | Population |
| 40. % distribution of migrant population (10 years duration) by period of migration, Gender, area: Rural & Urban | Yearly | Numeric | Population |
| 41. % distribution of employed persons (10 years duration) by major occupation groups, place of work and Gender, Rural & Urban | Yearly | Numeric | Population |
| 42. % distribution of employed persons (10 years duration) by hours worked, major occupation groups and Gender: Rural & Urban | Yearly | Numeric | Population |
| 43. % distribution of employed persons (10 years duration) by hours worked, major industry divisions and Gender: Rural & Urban | Yearly | Numeric | Population |
| 44. % distribution of employed persons (10 years duration) and over who were seeking alternative work during last week by province, area and Gender | Yearly | Numeric | Population |
| 45. % distribution of employed persons (10 years duration) by major industry divisions, place of work and Gender: Rural & Urban | Yearly | Numeric | Population |
| 46. % distribution of employed persons (10 years duration) by status of availability for additional work, province, area and Gender | Yearly | Numeric | Population |
| 47. % distribution of employed persons (10 years duration) by employment status, age and Gender: kp, Rural & Urban | Yearly | Numeric | Population |
| 48. % distribution of employed persons (10 years duration) by major occupation groups, employment status and Gender: Rural & Urban | Yearly | Numeric | Population |
| 49. % distribution of employed persons (10 years duration) by major industry division, employment status and Gender: Rural & Urban | Yearly | Numeric | Population |
| 50. % distribution of employed persons (10 years duration) by major occupation groups, age and Gender: Rural & Urban | Yearly | Numeric | Population |



| | | | |
|--|--------|---------|------------|
| 51. % distribution of employed persons (10 years duration) by major industry divisions, age and Gender: Rural & Urban | Yearly | Numeric | Population |
| 52. % distribution of employed persons (10 years duration) by major occupation groups, Gender and area (augmented employment) | Yearly | Numeric | Population |
| 53. % distribution of employed persons (10 years duration) by major industry divisions, Gender and area (augmented employment) | Yearly | Numeric | Population |
| 54. % distribution of employed persons (10 years duration) and over engaged in informal sector by number of hours worked, Gender : Rural & Urban | Yearly | Numeric | Population |
| 55. % distribution of employees (10 years duration) by periodicity of payment, Gender and province: Rural & Urban | Yearly | Numeric | Population |
| 56. % distribution of employed persons (10 years duration) and over available for/seeking additional work by employment status, area, Gender | Yearly | Numeric | Population |
| 57. % distribution of underemployed persons by major industry divisions, area and Gender | Yearly | Numeric | Population |
| 58. % distribution of underemployed persons by major occupation groups, area and Gender | Yearly | Numeric | Population |
| 59. % distribution of employed persons who did not work during the reference week by reasons, area and Gender | Yearly | Numeric | Population |
| 60. % distribution of employed persons (10 years duration) and over suffered occupational injuries/diseases by unsafe act that caused the accident/disease, area and Gender | Yearly | Numeric | Population |
| 61. % distribution of employed persons (10 years duration) and over suffered occupational injuries/diseases by unsafe conditions causing the accident/disease, area and Gender | Yearly | Numeric | Population |
| 62. % distribution of employed persons (10 years duration) and over suffered occupational injuries/diseases by type of incapacity to work by area and Gender | Yearly | Numeric | Population |
| 63. % distribution of unemployed persons (10 years duration) and over excluding those not available for work due to certain reasons by period of seeking work, Gender area and province | Yearly | Numeric | Population |
| 64. % distribution of unemployed persons (10 years duration) and over excluding unemployed persons not available for work due to certain reasons by steps taken during last month in search of work, Gender, area and province | Yearly | Numeric | Population |
| 65. % distribution of unemployed persons (10 years duration) and over with period of previous experience, Gender, area and province | Yearly | Numeric | Population |
| 66. % distribution of persons (10 years duration) and over who were not in labour force by reasons, area, Gender | Yearly | Numeric | Population |



| | | | |
|---|--------|---------|------------|
| 67. Average household size and its composition by Gender and quintiles, | Yearly | Numeric | Population |
| 68. % distribution of employed persons (ten years and above) by age, Gender and level of education | Yearly | Numeric | Population |
| 69. % distribution of employed persons by industry divisions, employment status, by Gender | Yearly | Numeric | Population |
| 70. % distribution of employed persons by occupation groups, employment status, by Gender | Yearly | Numeric | Population |
| 71. Number of employed persons (average / %s) per household by Gender and quintiles | Yearly | Numeric | Population |
| 72. % distribution of earners by head / other than head and employment status per household by Gender and quintiles | Yearly | Numeric | Population |
| 73. % distribution of employed persons by industry divisions, Gender and quintiles | Yearly | Numeric | Population |
| 74. % distribution of employed persons by occupation groups, Gender and quintiles | Yearly | Numeric | Population |
| 75. % distribution of monthly income of employed persons by industry divisions, Gender and quintiles | Yearly | Numeric | Population |
| 76. % distribution of monthly income of employed persons by occupation groups, Gender and quintiles | Yearly | Numeric | Population |
| 77. % distribution of monthly household income by source and quintiles, | Yearly | Numeric | Population |
| 78. % distribution of monthly income per household and employed persons, by Gender and quintiles | Yearly | Numeric | Population |
| 79. % distribution of households, population, monthly income and consumption expenditures by quintiles | Yearly | Numeric | Population |
| 80. % distribution of monthly consumption expenditure per households by commodity groups and quintiles | Yearly | Numeric | Population |



| Topic Energy | | | |
|--|------------------|---------------|-----------------|
| Department: Energy and Power | | | |
| Data Sets | Frequency | Format | Category |
| 1. District Wise Number of Villages Electrified in Khyber Pakhtunkhwa | Yearly | Numeric | Energy |
| 2. District Wise Electricity Connections Given During the year by Type in Khyber Pakhtunkhwa | Yearly | Text | Energy |
| 3. Number of Electricity Consumption during the year in Khyber Pakhtunkhwa | Yearly | Numeric | Energy |
| 4. Electricity Units Sold (Category Wise) in Khyber Pakhtunkhwa | Yearly | Numeric | Energy |
| 5. Electricity Consumption in Pakistan and Khyber Pakhtunkhwa | Yearly | Numeric | Energy |
| 6. Electricity Generation, Consumptions & Connections of Pakistan & Khyber Pakhtunkhwa | Yearly | Numeric | Energy |
| 7. Gas Connection by Type in Khyber Pakhtunkhwa | Yearly | Numeric | Energy |
| 8. Per Capita Gas Consumption in Khyber Pakhtunkhwa | Yearly | Numeric | Energy |
| 9. Connection/Consumption of Natural Gas in Pakistan & Khyber Pakhtunkhwa | Yearly | Numeric | Energy |
| 10. District-wise government facilities solarized | Yearly | Numeric | Energy |
| 11. District-wise renewable energy project initiated | Yearly | Numeric | Energy |



| Agriculture | | | |
|--|------------------|---------------|---------------------------------|
| Agriculture, Livestock and Cooperative Department | | | |
| Data Sets | Frequency | Format | Category |
| 1. District Wise No. of Veterinary Hospitals, Dispensaries and Centres in Khyber Pakhtunkhwa | Yearly | Number | Agriculture |
| 2. Dispensaries & Centres Against Contagious veterinary diseases in Khyber Pakhtunkhwa | Yearly | Number | Agriculture |
| 3. Tractor Population in Khyber Pakhtunkhwa | Yearly | Number | Agriculture |
| 4. District wise No. of Govt. Tractors in Khyber Pakhtunkhwa | Yearly | Number | Agriculture |
| 5. District wise No. of Govt. & Private Tube Wells in Khyber Pakhtunkhwa | Yearly | Number | Agriculture |
| 6. District wise No. of Agriculture Machinery in Khyber Pakhtunkhwa | Yearly | Number | Agriculture |
| 7. Province wise No. of Tubewells and Left Pumps | Yearly | Number | Agriculture |
| 8. Province wise No. of Tractors by Type | Yearly | Number | Agriculture |
| 9. Socio Economic indicators Agriculture of Pakistan by Province | Yearly | Number | Agriculture |
| 10. Province wise Per Capita Production of Major Crops | Yearly | Number | Agriculture |
| 11. Province wise Yield Per Hectare of Major Crops | Yearly | Number | Agriculture |
| 12. Province wise Rice Production and Requirement | Yearly | Number | Agriculture |
| 13. Province wise Wheat Production and Requirement | Yearly | Number | Agriculture |
| 14. District-wise No. of Water Ponds | Yearly | Number | Environment & Natural Resources |
| 15. District-wise No of production of fish seeds | Yearly | Number | Agriculture |
| 16. District Wise Fish Production in Khyber Pakhtunkhwa | Yearly | Numeric | Revenue & Taxation |
| 17. District Wise Revenue of Fisheries Department of Khyber Pakhtunkhwa | Yearly | Numeric | Revenue & Taxation |
| 18. District Wise Number of Fishing Licenses Issued in Khyber Pakhtunkhwa | Yearly | Numeric | Revenue & Taxation |



| Topic: Housing | | | |
|--|------------------|---------------|-----------------|
| Department: Housing Department | | | |
| Data Sets | Frequency | Format | Category |
| 1. Housing Units by Household Size, Number of Rooms & Rural/ Urban | Yearly | Numeric | Housing |
| 2. Housing Units by Number of Rooms, Tenure and Rural/Urban of Khyber Pakhtunkhwa | Yearly | Numeric | Housing |
| 3. Owned Housing Units by Period of Construction, Number of Rooms and Rural/Urban of Khyber Pakhtunkhwa | Yearly | Numeric | Housing |
| 4. Housing Units by Number, Material Used in Outer Walls, Roofs and Rural/Urban of Khyber Pakhtunkhwa | Yearly | Numeric | Housing |
| 5. Owned Housing Units by Period of Construction, Material used in Outer Walls, Roofs & Rural/Urban of Khyber Pakhtunkhwa | Yearly | Numeric | Housing |
| 6. Housing Units by Tenure, Source of Drinking Water, Lighting, Cooking Fuel Used and Rural/Urban of Khyber Pakhtunkhwa | Yearly | Numeric | Housing |
| 7. Owned Housing Units by Period of Construction, Source of Drinking Water, Lighting, Cooking Fuel used & Rural/ Urban of Khyber Pakhtunkhwa | Yearly | Numeric | Housing |
| 8. Housing Units by Tenure, Kitchen, Bath Room, Latrine Facilities and Rural/Urban of Khyber Pakhtunkhwa | Yearly | Numeric | Housing |
| 9. No. of Households by Source of Information and Rural/Urban of Khy: Pakhtunkhwa | Yearly | Numeric | Housing |
| 10. District wise Number of Housing unit (Urban & Rural) by Type Khyber Pakhtunkhwa | Yearly | Numeric | Housing |
| 11. Land Utilization Statistics in Khyber Pakhtunkhwa | Yearly | Numeric | Housing |
| 12. Percentage Proportion and Variation of Land Utilization in Khyber Pakhtunkhwa | Yearly | Numeric | Housing |
| 13. District Wise Land Utilization Statistics in Khyber Pakhtunkhwa | Yearly | Numeric | Housing |
| 14. Cropping Intensity and Land Use Intensity in Khyber Pakhtunkhwa | Yearly | Numeric | Housing |
| 15. District Wise Cropping Intensity & Land Use Intensity in Khyber Pakhtunkhwa | Yearly | Numeric | Housing |
| 16. District Wise Number of Govt. & Private Farms by Size in Khyber Pakhtunkhwa | Yearly | Numeric | Housing |
| 17. District/Tehsil Wise Number of Qanungo Circles, Patwar Circles, Mouzas and Total Area in Khyber Pakhtunkhwa | Yearly | Numeric | Housing |



| Auqaf, Hajj, Religious and Minority Affairs Department | | | |
|---|------------------|---------------|----------------------------|
| Department: Auqaaf | | | |
| Data Sets | Frequency | Format | Category |
| 1. List of Shrines, Mosques and Waqf Properties | Yearly | Number | Right to Information |
| 2. Name of mosque with location | Yearly | Number | Right to Information |
| 3. Circle wise details of attached properties | Yearly | Number | Right to Information |
| 4. Celebrations of annual urs of main dargahs | Yearly | Number | Right to Information |
| 5. List of authorised umrah tour operators | Yearly | Number | Public Service Delivery |
| 6. List of hajj group organizers for hajj operations | Yearly | Number | Public Service Delivery |
| 7. List of qualified enrolled hajj companies for the allotment of hajj quota for hajj | Yearly | Number | Public Service Delivery |
| 8. List of hajj group organizers for hajj operations | Yearly | Number | Public Service Delivery |
| 9. Welfare Package for Minorities in Khyber Pakhtunkhwa. | Yearly | Number | Marginalised Communication |
| 10. Eid Gah & Janazgah in Khyber Pakhtunkhwa | Yearly | Number | Right to Information |
| 11. Grant for Deeni Madaris in Khyber Pakhtunkhwa | Yearly | Number | Fiscal Transparency |
| 12. No of Churches in KPK | Yearly | Number | Marginalised Communication |
| 13. District-wise scholarship provided to students | Yearly | Number | Education |



| Sports, Culture Tourism Department | | | |
|---|------------------|---------------|---------------------------|
| Department: Sports, Culture & Tourism | | | |
| Data Sets | Frequency | Format | Category |
| 1. List of provincial sports grounds by type and category | Yearly | Text | Sports, Culture & Tourism |
| 2. District-wise sports activities | Yearly | Text | Sports, Culture & Tourism |
| 3. Fund allocation for various sport activities | Yearly | Text | Sports, Culture & Tourism |
| 4. List of Cultural Activities | Yearly | Text | Sports, Culture & Tourism |
| 5. Fund allocation for various cultural activities | Yearly | Text | Sports, Culture & Tourism |
| 6. District-wise list of tourist attraction area | Yearly | Text | Sports, Culture & Tourism |
| 8. List of tourist designated spots in Khyber Pakhtunkhwa | Yearly | Text | Sports, Culture & Tourism |
| 9. List of events scheduled for the year | Yearly | Text | Sports, Culture & Tourism |
| 10. Revenue generation through various tourism activities in KP | Yearly | Number | Sports, Culture & Tourism |
| 11. Per day flow of tourists to various tourist places | Yearly | Number | Sports, Culture & Tourism |
| 12. Tourist Areas in KP | Yearly | Text | Sports, Culture & Tourism |
| 13. Heritage Sites of Khyber Pakhtunkhwa. | Yearly | Text | Sports, Culture & Tourism |



| Excise & Taxation | | | |
|--|------------------|---------------|--------------------|
| Department: Excise & Taxation | | | |
| Data Sets | Frequency | Format | Category |
| 1. Urban Movability Property Tax collected | Yearly | Numeric | Revenue & Taxation |
| 2. Motor Vehicle Tax Collected | Yearly | Numeric | Revenue & Taxation |
| 3. Hotel Tax Collected | Yearly | Numeric | Revenue & Taxation |
| 4. Excise Duty Tax Collected | Yearly | Numeric | Revenue & Taxation |
| 5. Provincial Excise Duty Tax Collected | Yearly | Numeric | Revenue & Taxation |
| 6. MV dealers Tax | Yearly | Numeric | Revenue & Taxation |
| 7. Total Tax Collected | Yearly | Numeric | Revenue & Taxation |



| Science Technology and Information Technology Department | | | |
|---|------------------|---------------|--------------------|
| Department: ST&IT | | | |
| Data Sets | Frequency | Format | Category |
| 1. No of IT Parks established in Khyber Pakhtunkhwa | Yearly | Numer ic | Employment |
| 2. No of Incubation Center established | Yearly | Numer ic | Employment |
| 3. No of eGovernance Project initiated in Khyber Pakhtunkhwa | Yearly | Numer ic | Digital Governance |
| 4. No of Science Labs in Khyber Pakhtunkhwa in Government Schools | Yearly | Numer ic | Education |
| 6. No of IT Training Institutes established | Yearly | Numer ic | Education |
| 7. No of Computerization of Institutions in Khyber Pakhtunkhwa | Yearly | Numer ic | Digital Governance |
| 8. No of Registered Software Houses in Khyber Pakhtunkhwa | Yearly | Numer ic | Employment |
| 9. Digital Jobs for Khyber Pakhtunkhwa | Yearly | Numer ic | Employment |
| 10. No of internships provided | Yearly | Numer ic | Employment |
| 11. No of cyber response support to Government Department | Yearly | Numer ic | Digital Governance |
| 12. No of employees on Digital Technologies | Yearly | Numer ic | Employment |
| 13. No of school children trained on IT-based systems | Yearly | Numer ic | Education |
| 14. No of BPO ready spaces established | Yearly | Numer ic | Employment |
| 15. No of Scientific interventions initiated | Yearly | Numer ic | Digital Governance |



| Information Department | | | |
|---|------------------|---------------|----------------------|
| Department: Information & Public Relation | | | |
| Data Sets | Frequency | Format | Category |
| 1. Newspapers & Periodicals by Frequency and by Languages in Khyber Pakhtunkhwa | Yearly | Numeric | Right to Information |
| 2. District Wise Number of Printing Presses in Khyber Pakhtunkhwa | Yearly | Numeric | Right to Information |
| 3. District Wise Number of Television Sets in Khyber Pakhtunkhwa | Yearly | Numeric | Right to Information |
| 4. District wise number of social media accounts of the Government | Yearly | Numeric | Right to Information |
| 5. No of Newspapers clippings issued | Yearly | Numeric | Right to Information |
| 6. No of Public Service Announcements through FM Radio Stations | Yearly | Numeric | Right to Information |
| 7. No of accreditation cards issued to journalists | Yearly | Numeric | Right to Information |
| 8. No of registered journalists with Government | Yearly | Numeric | Right to Information |



| Irrigation Department | | | |
|--|------------------|---------------|-------------------|
| Department: Irrigation | | | |
| Data Sets | Frequency | Format | Category |
| 1. Area Irrigated by different sources in Khyber Pakhtunkhwa | Yearly | Numeric | Agriculture |
| 2. District Wise Area Irrigated by different sources in Khyber Pakhtunkhwa | Yearly | Numeric | Agriculture |
| 3. District wise percentage Area irrigated by different sources with cultivated area in Khyber Pakhtunkhwa | Yearly | Numeric | Agriculture |
| 4. List of Irrigation Channels in KP | Yearly | Numeric | Agriculture |
| 5. No of small dams constructed in Khyber Pakhtunkhwa | Yearly | Numeric | Agriculture |
| 6. District-wise Amount of Abyana collected | Yearly | Numeric | Revenue & taction |



| Human Rights | | | |
|---|------------------|---------------|-----------------|
| Department: Law, Parliamentary Affairs & Human Rights | | | |
| Data Sets | Frequency | Format | Category |
| 1. No facilities for professional and technical training at home and abroad relating to human rights issues | Yearly | Number | Human Rights |
| 2. No of Formulating programmes of teaching of human rights at educational institutions | Yearly | Number | Human Rights |
| 3. No of Human Rights Offices in khyber Pakhtunkhwa | Yearly | Number | Human Rights |
| 4. No of Courts in Khyber Pakhtunkhwa | Yearly | Number | Human Rights |



| District Administration | | | |
|--|------------------|---------------|----------------------|
| Department: District Administration | | | |
| Data Sets | Frequency | Format | Category |
| 1. Total area of the District | Yearly | Numeric | Right to Information |
| 2. Total Area in Acres | Yearly | Numeric | Right to Information |
| 3. Unirrigated Area in Acres | Yearly | Numeric | Right to Information |
| 4. Irrigated area in Acres | Yearly | Numeric | Right to Information |
| 5. Barren Land in Acres | Yearly | Numeric | Right to Information |
| 6. Total cultivated area | Yearly | Numeric | Right to Information |
| 7. Major Crops in District | Yearly | Text | Right to Information |
| 8. Population | Yearly | Numeric | Right to Information |
| 9. Female Population | Yearly | Numeric | Right to Information |
| 10. Male Population | Yearly | Numeric | Right to Information |
| 11. Rural Population | Yearly | Numeric | Right to Information |
| 12. Urban Population | Yearly | Numeric | Right to Information |
| 13. Tehsils | Yearly | Text | Right to Information |
| 14. Sub Tehsil | Yearly | Text | Right to Information |
| 15. Union Councils | Yearly | Text | Right to Information |
| 16. Village Councils | Yearly | Text | Right to Information |
| 17. Total Patwar Khana/Cirlces | Yearly | Text | Right to Information |
| 18. Girdawar Circle | Yearly | Text | Right to Information |
| 19. Tehsildar | Yearly | Text | Right to Information |
| 20. Naib Tehsildar | Yearly | Text | Right to Information |
| 21. Total Mozas | Yearly | Text | Right to Information |
| 22. No of TMAs in District | Yearly | Text | Right to Information |
| 23. Sports Grounds | Yearly | Number | Right to Information |
| 24. Parks | Yearly | Number | Right to Information |
| 25. District Website | Yearly | Web link | Digital Governance |
| 26. Literacy rate | Yearly | % | Education |
| 28. Colleges | Yearly | Number | Education |
| 29. High Secondary Schools | Yearly | Number | Education |



| | | | |
|---|--------|--------|-------------------------|
| 30. High Schools | Yearly | Number | Education |
| 31. Universities | Yearly | Number | Education |
| 32. Number of Private Schools | Yearly | Number | Education |
| 33. Polio Cases | Yearly | Number | Health |
| 34. Total Number of churches | Yearly | Number | Health |
| 35. No of Disable Persons | Yearly | Number | Health |
| 36. Number of Picnic Spots | Yearly | Number | Culture & Tourism |
| 37. Number of Doctors | Yearly | Number | Health |
| 38. Number of Paramedical Staff | Yearly | Number | Health |
| 39. Emergency Services (Rescue 1122) | Yearly | Number | Health |
| 40. Number of Ambulances | Yearly | Number | Health |
| 41. Total Cantt Areas | Yearly | Number | Health |
| 42. Additional District & Session Judges Courts | Yearly | Number | Public Service Delivery |
| 43. Senior Civil Judges | Yearly | Number | Public Service Delivery |
| 44. Student Enrollment | Yearly | Number | Education |
| 45. Civil Hospital (Cat:C) | Yearly | Number | Health |
| 46. Civil Hospital (Cat:C) | Yearly | Number | Health |
| 47. Civil Hospital (Cat:D) | Yearly | Number | Health |
| 48. RHCs | Yearly | Number | Health |
| 49. BHUs | Yearly | Number | Health |
| 50. MCH | Yearly | Number | Health |
| 51. SHC | Yearly | Number | Health |
| 52. CDs | Yearly | Number | Health |
| 53. CHCs | Yearly | Number | Health |
| 54. Total Sanctioned Post of Doctor | Yearly | Number | Health |



| | | | |
|--|--------|--------|---------------------------------|
| 55. C&W Roads | Yearly | Number | Transport & Communication |
| 56. PKHA Roads | Yearly | Number | Transport & Communication |
| 57. Total Grid Stations | Yearly | Number | Energy |
| 58. Total Feeders | Yearly | Number | Energy |
| 59. Total Police Stations | Yearly | Number | Public Service Delivery |
| 60. Crime Rate | Yearly | Number | Crime |
| 61. Total No of Veterinary Hospitals in District | Yearly | Number | Livestock |
| 62. Livestocks in District | Yearly | Number | Livestock |
| 63. Seasonal Fruits in District | Yearly | Number | Agriculture |
| 64. No of Forests in District | Yearly | Number | Environment & Natural Resources |
| 65. No of Dams in District | Yearly | Number | Energy |
| 66. No of Rest Houses in District | Yearly | Number | Culture & Tourism |
| 67. No of Women Parks in District | Yearly | Number | Culture & Tourism |
| 68. No of Prisoners in District | Yearly | Number | Crime |
| 69. No of Vehicles registered in District | Yearly | Number | Revenue & taxation |
| 71. No of Housing Societies in District | Yearly | Number | Housing |
| 72. No of Private Clinics in District | Yearly | Number | Health |
| 73. No of Medical Stores in District | Yearly | Number | Health |
| 74. No of Playgrounds in District | Yearly | Number | Sports |
| 78. Total Sanctioned Posts in District | Yearly | Number | Right to Information |
| 80. No of Traffic Wardens in District | Yearly | Number | Right to Information |
| 81. No of Wildlife Reserves (Game Reserves) | Yearly | Number | Environment & Natural Resources |
| 82. No of Mining Sites | Yearly | Number | Environment & Natural Resources |
| 83. No of Population Welfare Centers | Yearly | Number | Public Service Delivery |
| 84. No of Lady Health Workers in District | Yearly | Number | Health |



| | | | |
|--|---------|---------|-------------------------|
| 85. List of VC/NC Councils in District | Yearly | Number | District Administration |
| 86. List of tourism spots in District. | Yearly | Number | Culture & Tourism |
| 87. List of Parks in District | Yearly | Number | Culture & Tourism |
| 88. List/location of Govt Buildings in District | Yearly | Number | Right to Information |
| 89. List of Government Vehicles in District | Yearly | Number | Right to Information |
| 90. List of District ADP Schemes | Yearly | Number | Fiscal Transparency |
| 91. List of Archeology sites | Yearly | Number | Culture & Tourism |
| 92. Computerization Land Revenue Record of District | Yearly | Number | Public Service Delivery |
| 93. Contact List of all Govt offices in the District | Yearly | Number | Public Service Delivery |
| 94. No of Blood Banks in the District | Yearly | Number | Health |
| 95. No. of NOCs issued (Petrol Pumps, Private Parks, Festivals etc.) | Monthly | Numeric | Public Service Delivery |



| Water Supply & Sanitation | | | |
|--|------------------|---------------|---------------------------|
| Department: PHE, TMA, WSSC | | | |
| Data Sets | Frequency | Format | Category |
| 1. Number of Functional Tube-wells in the District | Yearly | Numeric | Water Supply & Sanitation |
| 2. Functionalization / rehabilitation of non-functional Water Supply Schemes | Yearly | Numeric | Water Supply & Sanitation |
| 3. Chlorination / cleaning of all Water tanks | Yearly | Numeric | Water Supply & Sanitation |
| 4. New sanitation schemes completed | Yearly | Numeric | Water Supply & Sanitation |
| 5. Percentage rural population with access to safe drinking water | Yearly | Numeric | Water Supply & Sanitation |
| 6. Water pipeline repaired | Yearly | Numeric | Water Supply & Sanitation |
| 7. Total number of Million Gallen Day (MGD) demand for clean drinking water | Yearly | Numeric | Water Supply & Sanitation |
| 8. Total number of MGD of Clean water produced | Yearly | Numeric | Water Supply & Sanitation |
| 9. Total number of new Tube Wells installed | Yearly | Numeric | Water Supply & Sanitation |
| 10. Total number of tube-wells operationalised / rehabilitated | Yearly | Numeric | Water Supply & Sanitation |
| 11. Total number (in meters) of rusted pipes changed | Yearly | Numeric | Water Supply & Sanitation |
| 12. Total number (in meters) of broken pipes repaired / changed | Yearly | Numeric | Water Supply & Sanitation |
| 13. Total number of water meters installed | Yearly | Numeric | Water Supply & Sanitation |
| 14. Total number of filtration plants installed rehabilitated | Yearly | Numeric | Water Supply & Sanitation |
| 15. Total number of surface water schemes implemented | Yearly | Numeric | Water Supply & Sanitation |
| 16. Total number of water quality tests conducted | Yearly | Numeric | Water Supply & Sanitation |
| 17. Total number of Overhead reservoirs cleaned / chlorinated | Yearly | Numeric | Water Supply & Sanitation |
| 18. Total number of pipes relocated from drains / other vulnerable points | Yearly | Numeric | Water Supply & Sanitation |



| Transport | | | |
|--|------------------|---------------|---------------------------|
| Department: Transport & Mass Communication Department | | | |
| Data Sets | Frequency | Format | Category |
| 1. Revenue Generated (Rs. in Million) | Yearly | Numeric | Transport & Communication |
| 2. Issuance of Permits (No) | Yearly | Numeric | Transport & Communication |
| 3. Total No of Motor Vehicle Fitness Certificates issued | Yearly | Numeric | Transport & Communication |
| 4. Total No of Driving Licenses Issued (LTV/HTV) | Yearly | Numeric | Transport & Communication |
| 5. Total No of Vehicle Emission Control Certificates issued | Yearly | Numeric | Transport & Communication |
| 6. Utilization in Developmental Portfolio | Yearly | Numeric | Transport & Communication |
| 7. BRT Ridership and BRT fare & non fare Revenues generated | Yearly | Numeric | Transport & Communication |



| Relief & Rehabilitation | | | |
|---|------------------|---------------|-------------------------|
| Department: Relief, Rehabilitation & Settlement Department | | | |
| Data Sets | Frequency | Format | Category |
| 1. District wise no. of disaster control rooms established(with contact numbers) | Yearly | Numeric | Relief & Rehabilitation |
| 2. District wise no. of relief warehouses | Yearly | Numeric | Relief & Rehabilitation |
| 3. District wise & type wise no. of disasters recorded (Flood, Snow storm, fire, land sliding etc.) | Yearly | Numeric/Text | Relief & Rehabilitation |
| 4. District wise no. casualties recorded (male, female, kids) | Yearly | Numeric | Relief & Rehabilitation |
| 5. District wise no. of Houses affected | Yearly | Numeric | Relief & Rehabilitation |
| 6. District wise no. of cattles affected | Yearly | Numeric | Relief & Rehabilitation |
| 7. District wise no. of Govt. buildings affected | Yearly | Numeric | Relief & Rehabilitation |
| 8. District wise no. of families relief provided (type of relief provided) | Yearly | Numeric/Text | Relief & Rehabilitation |
| 9. District wise no. of relief cases pending | Yearly | Numeric | Relief & Rehabilitation |
| 10. District wise no. of relief equipment/items available in disaster warehouses | Yearly | Numeric/Text | Relief & Rehabilitation |
| 11. District wise no. of relief equipment/items provided by foreign agencies (i.e USAID, Chinaid, ICRC etc. | Yearly | Numeric/Text | Relief & Rehabilitation |
| 12. District wise no. of Civil Defence volunteers | Yearly | Numeric | Relief & Rehabilitation |
| 13. District wise no. of ambulances | Yearly | Numeric | Relief & Rehabilitation |
| 14. District wise no. of fire fighting vehicles | Yearly | Numeric | Relief & Rehabilitation |
| 15. Number of districts integrated - Provincial Emergency Operation Centre (PEOC) | Yearly | Numeric | Relief & Rehabilitation |
| 16. Number of districts where District Disaster Management Units established | Yearly | Numeric | Relief & Rehabilitation |
| 17. Number of personnel for each District Disaster Management Unit | Yearly | Numeric | Relief & Rehabilitation |
| 18. Number of pre –fabricated warehouses | Yearly | Numeric | Relief & Rehabilitation |
| 19. Number of 1122 Emergency Units | Yearly | Numeric | Relief & Rehabilitation |
| 20. Number of Warden posts | Yearly | Numeric | Relief & Rehabilitation |
| 21. Number of districts with emergency services: Rescue1122 | Yearly | Numeric | Relief & Rehabilitation |
| 22. Number of districts with emergency services: Civil Defence | Yearly | Numeric | Relief & Rehabilitation |
| 23. Number of Rescue 1122 liaison units in hospital | Yearly | Numeric | Relief & Rehabilitation |
| 24. Number of personnel trained | Yearly | Numeric | Relief & Rehabilitation |
| 25. Number of volunteers registered | Yearly | Numeric | Relief & Rehabilitation |





ACKNOWLEDGMENTS

This strategy represents a partnership with representatives of government departments, directorates, attach formation and district administration, and is the outcome of their inputs and feedback. We gratefully acknowledge for their contributions to this strategy:

- Dr. Shahzad Bangash, Chief Secretary Khyber Pakhtunkhwa
- Mr. Shahab Ali Shah, Additional Chief Secretary Khyber Pakhtunkhwa
- Capt. Rtd. Abdur Rehman, Director PMRU
- Mr. Kashif Iqbal Jilani, Ex-Director PMRU
- Mr. Muhammad Fawad, Ex-Director PMRU
- Mr. Shahid Mehmood, Chief Economist P&D Khyber Pakhtunkhwa.
- Mr. Adil Raza, Deputy Director (Performance Management), PMRU
- Dr. Akif Khan, Deputy Director (eGovernance), PMRU
- Mr. Abid Alam, Deputy Director MIS, Regional Accounts Wing, Office of the chief economist, P&D.
- Mr. Shafaat Ahmad Qureshi, MIS Specialist, GPP Khyber Pakhtunkhwa
- Mr. Babar Ali, Data Analyst, PMRU
- Mr. Amir Abbas, Performance Management Officer, PMRU
- Mr. Nangial Khan, UX Specialist, PMRU
- Mr. Zeeshan Khan, Graphic Designer, PMRU
- Mr. Marina Khan, Public Outreach Officer, PMRU
- Mr. Syed Shariq Laique, Data Analyst, PMRU
- Mr. Shahzad Ahmad, Data Analyst, PMRU
- Mr. Muhammad Nauman Khan, Data Analyst, PMRU
- Mr. Amir Hamza, Data Analyst, PMRU
- Mr. Ebtihaj Khan, Program Manager (Code for Pakistan)
- Mr. Sohail Khan, Associate Program Manager (Code for Pakistan)
- Mr. Ali Waqas, Fellow (Code for Pakistan)
- Mr. Muhammad Nawaz Wali, Fellow (Code for Pakistan)
- Mr. Atta Ullah Fellow (Code for Pakistan)



15. IMPLEMENTATION PLAN

In order to implement the Open Government Strategy, three ‘streams’ of effort have been identified. These streams are based on international best practices as outlined by the Open Government Partnership, an international platform committed to making governments more open, accountable, and responsive to citizens. An implementation roadmap is an essential element of the Master Plan and highlights areas of activity and their sequencing. It provides a high-level direction for activating the plan and ensuring tangible outcomes for the Open Data Program. The roadmap should be flexible and adjust to needs and evolving opportunities.

| S.No | Activity | Timeline | Responsibility |
|------|--|-------------|------------------------|
| 1 | Identify new datasets to publish as Open Data. In particular: <ol style="list-style-type: none"> Identify specific domains for priority focus to allow for release of high-value datasets e.g. Education, Environment, Health, Transport, Culture, and Heritage etc. Identify sectors where potential economic benefits can be achieved by wider availability of Open Data e.g. Tourism, Culture, and Heritage, Transport, Energy and Environment, Health, Planning, Education, Science, and Technology | 15 Days | Departments, PMRU |
| 2 | Develop a comprehensive catalogue of government departments, directorates, attach units and district administration | 15 days | PMRU, Concerned Office |
| 3 | Ensure all datasets comply with the Technical Framework (license, formats, metadata, and standards) and are published to a minimum 3-star rating such as CSV, JSON or XML. It is encouraged to publish datasets in multiple formats such as PDF (1 star), Microsoft Excel (2 stars) in addition to the required 3 stars. Embed the publication of 3-star data into existing data processes of government. Increase the amount of available 4 and 5-star data on the Open Data Portal over time in collaboration with government offices. | 10 days | PMRU |
| 4 | Review the Technical Framework on a regular basis to ensure that it is updated as required to reflect any new common standards/formats for the metadata information provided with all datasets | On-going | PMRU |
| 5 | Regularly engage in outreach and collaboration activities and events to raise awareness of Open Data, publicize Open Data progress and use, and seek input from government, academia, business, researchers and citizens | On-going | PMRU, all stakeholders |
| 6 | Provide raw data for publicly funded research in Open Data format. Use and help drive the uptake of Open Data for research, development, policy-making and innovation purposes. | On-going | Academia |
| 7 | Identify emerging national/international trends for Open Data | On-going | PMRU |
| 8 | Develop metrics for benefits capture/evaluation. | 30 days | PMRU, all stakeholders |
| 9 | Provide training for relevant staff in public bodies: general Open Data training, data management, technical and operational as appropriate (through drawdown from training framework or by other means such as qualified Open Data ‘train the trainers’). Consider opportunities for the pooling of resources by public bodies in this regard. | 15 days | PMRU, all stakeholders |
| 10 | Provide technical support for relevant staff in public bodies: data audit, development of publication plans, etc. (through drawdown from the framework for technical support or through other means). | On-going | PMRU |
| 11 | Submission of Progress on Open Government Data in Cabinet | Bi-annually | PMRU |



KP OPEN DATA STRATEGY



pmru.gkp.pk

